



FAI Sporting Code

*Fédération
Aéronautique
Internationale*

Section 4 – Aeromodelling

Volume S Space Models

2016 Edition

Effective 1st January 2016

- S1 - ALTITUDE
- S2 & S2/P - PAYLOAD
- S3 - PARACHUTE DURATION
- S4 - BOOST/GLIDE DURATION
- S5 - SCALE ALTITUDE
- S6 - STREAMER DURATION
- S7 - SCALE
- S8 & S8E/P - ROCKET GLIDER DURATION
- S9 - GYROCOPTER DURATION
- S10 - FLEX-WING DURATION
- ANNEX 1 - SCALE SPACE MODELS JUDGES' GUIDE
- ANNEX 2 - SPACE MODELS JUDGES' GUIDE
- ANNEX 3 - SPACE MODEL RULES FOR WORLD CUPS
- ANNEX 4 - SPACE MODELS INTERNATIONAL RANKING
- ANNEX 5 - GENERAL ORGANISATION OF A WORLD CHAMPIONSHIP
- S6A/P - STREAMER TARGET TIME DURATION COMPETITION (PROVISIONAL)
- S11/P - ROCKET POWERED AIRCRAFT AND SPACESHIPS (PROVISIONAL)
- S12/P - TIME DURATION TRIATHLON TOURNAMENT (PROVISIONAL)

*Maison du Sport International
Avenue de Rhodanie 54
CH-1007 Lausanne
Switzerland
Tel: +41(0)21/345.10.70
Fax: +41(0)21/345.10.77
Email: sec@fai.org
Web: www.fai.org*

FEDERATION AERONAUTIQUE INTERNATIONALE

MSI - Avenue de Rhodanie 54 – CH-1007 Lausanne – Switzerland

Copyright 2016

All rights reserved. Copyright in this document is owned by the Fédération Aéronautique Internationale (FAI). Any person acting on behalf of the FAI or one of its Members is hereby authorised to copy, print, and distribute this document, subject to the following conditions:

- 1. The document may be used for information only and may not be exploited for commercial purposes.**
- 2. Any copy of this document or portion thereof must include this copyright notice.**
- 3. Regulations applicable to air law, air traffic and control in the respective countries are reserved in any event. They must be observed and, where applicable, take precedence over any sport regulations.**

Note that any product, process or technology described in the document may be the subject of other Intellectual Property rights reserved by the Fédération Aéronautique Internationale or other entities and is not licensed hereunder.

RIGHTS TO FAI INTERNATIONAL SPORTING EVENTS

All international sporting events organised wholly or partly under the rules of the Fédération Aéronautique Internationale (FAI) Sporting Code¹ are termed *FAI International Sporting Events*². Under the FAI Statutes³, FAI owns and controls all rights relating to FAI International Sporting Events. FAI Members⁴ shall, within their national territories⁵, enforce FAI ownership of FAI International Sporting Events and require them to be registered in the FAI Sporting Calendar⁶.

Permission and authority to exploit any rights to any commercial activity at such events, including but not limited to advertising at or for such events, use of the event name or logo for merchandising purposes and use of any sound and/or image, whether recorded electronically or otherwise or transmitted in real time, must be sought by way of prior agreement with FAI. This includes specifically all rights to the use of any material, electronic or other, that forms part of any method or system for judging, scoring, performance evaluation or information utilised in any FAI International Sporting Event⁷.

Each FAI Air Sport Commission⁸ is authorised to negotiate prior agreements on behalf of FAI with FAI Members or other entities as appropriate, of the transfer of all or parts of the rights to any FAI International Sporting Event (except World Air Games events⁹) which is organised wholly or partly under the Sporting Code section¹⁰ for which that Commission is responsible¹¹. Any such transfer of rights shall be by "Organiser Agreement"¹² as specified in the current FAI Bylaws Chapter 1, para 1.2 "Rules for Transfer of Rights to FAI International Sporting Events".

Any person or legal entity which accepts the responsibility for organising an FAI Sporting Event, whether or not by written agreement, in doing so also accepts the proprietary rights of FAI as stated above. Where no formal transfer of rights has been established, FAI retains all rights to the event. Regardless of any agreement or transfer of rights, FAI shall have, free of charge for its own archival and/or promotional use, full access to any sound and/or visual images of any FAI Sporting Event, and always reserves itself the right to have any and all parts of any event recorded, filmed and/or photographed for such use, without charge.

1 FAI Statutes, Chapter 1, para. 1.6

2 FAI Sporting Code, General Section, Chapter 4, para 4.1.2

3 FAI Statutes, Chapter 1, para 1.8.1

4 FAI Statutes, Chapter 2, para 2.1.1; 2.4.2; 2.5.2 and 2.7.2

5 FAI Bylaws, Chapter 1, para 1.2.1

6 FAI Statutes, Chapter 2, para 2.4.2.2.5

7 FAI Bylaws, Chapter 1, para 1.2.3

8 FAI Statutes, Chapter 5, para 5.1.1; 5.5 and 5.6

9 FAI Sporting Code, General Section, Chapter 4, para 4.1.5

10 FAI Sporting Code, General Section, Chapter 1, para 1.2. and Chapter 2, para 2.2

11 FAI Statutes, Chapter 5, para 5.6.3

12 FAI Bylaws, Chapter 1, para 1.2.2

PAGE DELIBERATELY LEFT BLANK

VOLUME S
SECTION 4 - SPACE MODELS
GENERAL REGULATIONS AND SPECIAL RULES FOR
CONTESTS, CHAMPIONSHIPS AND RECORDS

Part One	General Definitions
Part Two	Space Model Specifications
Part Three	Space Model Engine Standards
Part Four	General Rules for International Contests
Part Five	Class S1 Altitude Competition
Part Six	Class S2 Payload Competitions
Part Seven	Classes S3 & S6 Parachute/Streamer Duration Competitions
Part Eight	Class S4 Boost/Glide Duration Competition
Part Nine	Class S7 Scale Competition
Part Ten	Class S5 Scale Altitude Competition
Part Eleven	Class S8 Rocket Glider Duration Competitions
Part Twelve	Class S9 Gyrocopter Duration Competition
Part Thirteen	Class S10 Flex-Wing Duration Competition
Part Fourteen	Space Model Records
Table I –	Classification of Records
Table II –	Application for Record Attempt Confirmation Space Models
Table III –	Personnel
Table IV –	Duration Record Attempt Data
Table V –	Altitude Record Attempt Data (four sheets)
Table VI –	Record Dossier Check Form (Space Models)
Annex 1 –	Scale Space Models Judges' Guide
Annex 2 –	Space Models Judges' Guide
Annex 3 –	Space Models Rules for World Cup Events
Annex 4 –	Space Models International Ranking
Annex 5 –	General Organisation of a World Championship
S6A/P	Streamer Target Time Duration Competition (Provisional)
S11/P	Rocket Powered Aircraft and Spaceships Competition (Provisional)
S12/P	Time Duration Triathlon Tournament (Provisional)

THIS 2016 EDITION INCLUDES:

- **CONSEQUENTIAL AMENDMENTS MADE TO THE 2015 CODE**
- **THE FOLLOWING AMENDMENTS MADE TO THE 2014 CODE**

These amendments are marked by a double line in the right margin of this edition

Paragraph	Plenary meeting approving change	Brief description of change	Change incorporated by
Volume titles and footnotes	2015	Statutory amendment from SM to S (FAI GS Ed. 2016)	Kevin Dodd Technical Secretary
4.4.2		Consequential change for ABR Section 4B Para. B.17.6. : inclusion of FAI Unique ID number for marking purposes.	
Annex 3 - 9		Consequential change for ABR Section 4B Para. B.18.1. : increase protest fee from 35 to 50 Euro.	

Four-Year Rolling Amendments for Reference

Paragraph	Plenary meeting approving change	Brief description of change	Change incorporated by
2.4.4	2014	Minimum dimensions of subclasses.	Kevin Dodd Technical Secretary & Srdjan Pelagic, Space Models S/C Chairman
2.4.6		A prefabricated ejection charge permitted.	
3.10.3		New paragraph stating when engine static testing is not mandatory.	
3.14.2		New paragraph stating standard markings of space models engines.	
4.2		Number of models (added for classes S1 and S2)	
4.5.4		New paragraph - definition of a re-flight.	
4.7.5		Spread spectrum 2.4 GHz RCs recommended for WCh.	
4.8		Clarification of timing and classification.	
4.9.2.1		Hand held readers for Cat 2 events e-altitude contests.	
5.1		Clarification of terms for altitude contests.	
5.3		Correction of maximum weights for S1 space models.	
5.4		Redefinition of classification in S1 contests.	
9.11.2		Redefinition of adherence to scale static judging.	
11.2		Clarification of purpose for S8 space models.	
11.4		Clarification of timing and classification for S8 models.	
12.6.5		Definition of subclasses in a provisional class S12	
Annex 1		Redefinition of adherence to scale criteria	
Annex 2 – 3.d		Clarification of unsafe recovery.	
Annex 2 – 3.e	Engine ejection deleted.		

Four-Year Rolling Amendments for Reference

Paragraph	Plenary meeting approving change	Brief description of change	Change incorporated by
Annex 5	n/a (2013)	Consequential change from ABR Annex B.3	Jo Halman Technical Secretary

Four-Year Rolling Amendments .../cont

cont/... Four-Year Rolling Amendments for reference

Four-Year Rolling Amendments for Reference			
Paragraph	Plenary meeting approving change	Brief description of change	Change incorporated by
Front page & page 4	n/a	Corrected the listing of classes.	Technical Secretary
2.4	2012	Clarified construction and also metal parts.	Jo Halman Technical Secretary & Srdjan Pelagic Subcommittee Chairman
2.4.4		Relocated paragraph from 2.4.3.	
2.4.7		Clarified construction requirements.	
4.3		Organiser obligations on competition conditions.	
4.4.2		Model identification size and exclusion for S5 & S7.	
4.4.3		Clarified the "builder of the model" rule.	
4.7.4		Clarified type of transmitter.	
4.9		Deletion of tracking method using horizontal distance.	
4.9.2.1 b)		Additional rules for electronic altimeter functions.	
6.1		Clarification of the definition of class S2.	
6.2		Payload clarification.	
6.8		New class S2/P Precision Fragile Payload	
9.11.1		Class 7 – Scale judging clarification of points.	
9.11.2		Class 7 – Adherence to Scale amendments.	
9.11.3		Class 7 – Workmanship amendments.	
9.11.4		Class 7 – Degree of Difficulty amendments.	
11.2		Class 8 – clarification of the purpose of the class.	
11.5 c)		Class 8 – Landing field amendments.	
11.7.5.4		Class 8 – Clarification of pilots & helpers at the landing circles.	
Annex 1		S7 Scale class – Amend Technical data; Degree of difficulty; Scale Adherence; Workmanship.	
Annex 2	Judges & Organisers Guide – Add to 2. Judges Tasks including Special Judge Duties; Safety & Rule Compliance Officials.; Electronic Altimeter Test Officials 5. Organiser's Tasks		

Four-Year Rolling Amendments for Reference			
Paragraph	Plenary meeting approving change	Brief description of change	Change incorporated by
n/a	2011	None	n/a
1.2	n/a	Delete the word "rocket": superfluous.	Jo Halman Technical Secretary
3.1.1		Corrected misprint "casing".	
4.3.6, 4.7.1 & 4.8.1		Corrected ABR references.	
11.1		Corrected misprint "casing".	
Annex 2, Para 1		Clarified and corrected text.	
Annex 2, Para 2		Corrected "flight timers" to "timekeepers".	
Annex 2, Para 5		Added text for emphasis and clarification.	

RULE FREEZE FOR THIS VOLUME

With reference to paragraph A.13 of Volume ABR:

In all classes, the two-year rule for no changes to model aircraft/space model specifications, manoeuvre schedules and competition rules will be strictly enforced. For Championship classes, changes may be proposed in the year of the World Championship of each category.

For official classes without Championship status, the two-year cycle begins in the year that the Plenary Meeting approved the official status of the class. For official classes, changes may be proposed in the second year of the two-year cycle.

This means that in Volume Space Models:

- (a) changes can next be agreed at the Plenary meeting 2016 for application from January 2017;
- (b) provisional classes are not subject to this restriction.

The only exceptions allowed to the two-year rule freeze are genuine and urgent safety matters, indispensable rule clarifications and noise rulings.

PAGE DELIBERATELY LEFT BLANK

VOLUME S

GENERAL REGULATIONS AND SPECIAL RULES FOR SPACE MODEL CONTESTS, CHAMPIONSHIPS AND RECORDS

PART ONE – GENERAL DEFINITIONS

1.1 SPACE MODEL

“Space Model” means an aeromodel that ascends into the air without the use of aerodynamic lifting forces against gravity; that is propelled by means of a space model engine; that includes a device for returning it safely to the ground in a condition to fly again; and that is made of substantially non-metallic parts.

1.2 SPACE MODEL ENGINE

“Space model engine” means a solid propellant reaction engine in which all chemical ingredients of a combustible nature are pre-mixed and ready for use.

1.3 CLASSIFICATION OF SPACE MODELS

- S1 Altitude Models
- S2 Payload Models
- S3 Parachute duration models
- S4 Boost-glider duration models
- S5 Scale-altitude models
- S6 Streamer duration models
- S7 Scale models
- S8 Rocket glider duration models
- S9 Gyrocopter duration models
- S10 Flex-wing duration models

Each class, except class S7 has been subdivided related to engine size. Refer to the rules applicable to each particular class.

PAGE DELIBERATELY LEFT BLANK

PART TWO – SPACE MODEL SPECIFICATIONS

A space model must comply with the following requirements prior to launch, operation and flight.

2.1 WEIGHT

Gross or maximum weight, including space model engine or engines shall in no event exceed 1500 grams. It will be specified separately for each class in these rules.

2.2 PROPELLANT

No more than **200 g** of propellant materials shall be contained in its space model engines nor shall their total impulse exceed 160 Newton-seconds (Ns).

2.3 STAGES OF OPERATION

2.3.1 There shall be no more than three (3) operable stages. A stage is defined as a portion of the model airframe containing one or more space model engines that is designed to separate or which actually separates from the model while in flight. An un-powered part of the model is not considered to be a stage. The configuration of a model is considered to be that of the model at the instant of first motion on the launcher. Engines ignited simultaneously are considered one stage regardless of the number of separated parts; for example Soyuz.

2.3.2 Total impulse of engine(s) in a lower (booster) stage must, for safety reasons, be equal or greater than total impulse of engine(s) in (any) of upper stage(s). The thrust of the booster stage also must be equal or greater than the thrust of each of the upper stages. This does not relate the strapped-on boosters which are ignited simultaneously with the booster stage.

2.4 CONSTRUCTION REQUIREMENTS

2.4.1 A space model shall be so constructed to be capable of more than a single flight and shall contain a means for retarding its descent to the ground so that its structure may not be substantially damaged and so that no hazard is created to persons and property on the ground.

2.4.2 A space model must not eject its engine(s) in flight unless it/they is/are enclosed in an airframe that will descend in accordance with the provisions of paragraph 2.4.1. The engine(s) of the models cannot be fastened by glue and cannot be an integral part of model's construction.

2.4.3 Construction shall be of any modelling material without substantial metal parts. A substantial metal part is a nose cone, body tube, fins, any hard, sharp and external pointed part or any internal heavy metal part that can cause injuries to persons or damages to property.

2.4.4 Minimum dimensions of subclasses of classes S1, S2, S3, S5, S6, S9 and S10 must not be less than:

Event Class	Minimum diameter (mm) (for at least 50% of the overall length)	Minimum Overall Length (mm)
A	40	500
B	40	500
C	50	650
D	60	800
E	70	950
F	80	1100

In the case of Class S1 models, the smallest body diameter must be not less than 18 mm for at least 75% of the overall length of each stage. An S1 sustainer stage may not have a boat tail.

The minimum dimensions of Class S5 must not be less than:

Event Class	Minimum diameter (mm) of each stage	Minimum overall length (mm)
A	20	400
B	25	500
C	30	600
D	40	800
E	50	1000
F	60	1500

Class S5 models shall have a minimum diameter of an enclosed airframe equal or larger than that in the table above for at least 50% of the overall length of each stage.

- 2.4.5 Design and construction shall include attached surfaces that will provide aerodynamic stabilising and restoring forces necessary to maintain a substantially true and predictable flight path. If required by the rules for a specific class, local rules for competition and/or safety officers or judges, the builder of the model must present data regarding the locations of the centre of gravity, centre of pressure, gross weight, burnout weight, and/or calculated or measured flight performance of the model. These data must be submitted with models S5 and S7 at model processing before a model is entered to competition.
- 2.4.6 A space model shall not contain any type of explosive or pyrotechnic payload. A prefabricated ejection charge for ejection of a recovery device, in conjunction with a space model engine(s), shall not be considered explosive or pyrotechnic payload.
- 2.4.7 Models in Classes S4, S8 and S10 must fly and land without separation of any part in flight.

PART THREE – SPACE MODEL ENGINE STANDARDS

A space model engine which shall supply the propulsive force for a space model must conform to the following standards:

3.1 DESCRIPTION

3.1.1 A space model engine shall be a solid propellant reaction engine, which has all propellant ingredients preloaded into the casing in such a manner that they cannot easily be removed. Delay grains and ejection charges may be pre-mixed and packaged separately if the auxiliary package is a single, pre-assembled unit containing all of the remaining combustible material.

3.1.2 All space modelling events shall be divided into sub-classes according to total impulse as follows:

Event Class	Total Impulse
A/2	0,00 to 1.25 Newton-seconds (NS)
A	0,00 to 2.50 NS
B	2.51 to 5.00 NS
C	5.01 to 10.00 NS
D	10.01 to 20.00 NS
E	20.01 to 40.00 NS
F	40.01 to 80.00 NS

Note: A/2 models shall have 30 mm in diameter and will be 350 mm long. They will be used mainly for teaching beginners and for their practice.

3.1.3 Total impulse of a single engine is equal to the upper limit of the total impulse for the engine class.

3.1.4 In space modelling competitions usage of engines of the following total impulse is allowed:

Engine Class	Total Impulse
A/2	1.25 Ns
A	2.50 Ns
B	5.00 Ns
C	10.00 Ns
D	20.00 Ns
E	40.00 Ns
F	80.00 Ns

3.2 CASING

A space model engine casing shall be made of non-metallic material of low thermal conductivity. The temperature of the external surface of the casing shall not exceed 200 degrees Centigrade during or after operation. Minimum casting diameter shall not be less than 10 millimetres.

3.3 INTERNAL OVERPRESSURE

A space model engine must be so designed and constructed that it will not rupture its casing in the event of internal overpressure. Any malfunction resulting in internal overpressure should dissipate its force along the longitudinal axis of the engine.

3.4 SPONTANEOUS IGNITION

A space model engine must be so designed and constructed as to be incapable of spontaneous ignition in air, in water, as a result of physical shocks, jarring, impacts or motion under conditions that would reasonably be expected to occur during shipment, storage or use, or when subjected to a temperature of 80 degrees Centigrade or less.

3.5 LOADING, THRUST AND IMPULSE

A space model engine shall contain less than 125 grams of propellant material. It must not produce a total impulse of more than 100 Newton-seconds and must have a thrust duration longer than 0,050 seconds.

3.6 STORING AND SHIPPING

A space model engine shall be shipped and stored with no ignition element installed that may be actuated by an open flame, a temperature of less than 150 degrees Centigrade, or by incident radio-frequency radiation normally encountered during shipping, storage and use.

3.7 SEALING

A space model engine containing more than 20 grams of propellant materials shall be sealed at the factory with a non-metallic seal in the nozzle and in the forward end. These seals should be readily removable by the user unless the engine is designed to perform its function with the seals in place.

3.8 BURNING

A space model engine in operation shall expel from its nozzle no pieces of burning propellant and shall be incapable of igniting a piece of dry paper or grass at a distance of one metre or more from the nozzle of the engine.

3.9 MODIFICATIONS

A space model engine shall not be altered in any manner to change its published and established performance characteristics or dimensions.

3.10 CERTIFICATION FOR FAI CONTESTS

A space model engine used in a space model in FAI competition or for the purpose of establishing or surpassing FAI space model performance records shall be of a type previously tested and certified for such use by a National Airsports Control.

3.10.1 Competitors or team managers must submit to the competition Organiser in advance of the competition the National Airsports Control certification documents of all engine types to be used during the competition. These certification documents must include data on engine dimensions, loaded weight, propellant weight, total impulse, thrust time curve, and time delay. The certification documents must contain an affidavit stating that the space model engine type meets all FAI standards as set forth in these rules.

3.10.2 In World and Continental Championships the competition organisers must perform a static test on a random sample of each engine type to check the data submitted by a National Airsports Control. When engine testing is completed, engine testing officers shall produce a certificate that contains data specified in 3.10.1 and in addition to them: the date, venue, competition name, names of engine testing officials and type of engine tester. This certificate shall be signed by engine testing officers and the Organiser's authority, and stamped and may be used as a certificate similar to that in 3.10.1.

3.10.3 The organisers of World and Continental Championships are not obliged to perform a static test during the event if they provide all engines of the same type by the same producer for all participants in a particular class or classes. In such a case the organiser shall get the certification document in accordance with 3.10.1 by the producer and/or do the static test for random samples of engines to be used, prior to the Championships to make sure that the delivered engines are in compliance with the space model engine standards. This shall be specified in Bulletin 1 for the Championships.

3.11 STATIC TESTING

Static testing by a National Airsports Control may be carried out by itself or by an organisation designated by the National Airsports Control. In all cases, the National Airsports Control shall be responsible for the accuracy and correctness of all test data.

Copies of the test results should, at their request, be given to the team managers of the competing countries.

Engines must be submitted in batches for testing. Batch is defined as the engines required for one engine class in an event regardless of delay length. Maximum three batches are allowed per engine class per an event. In case of failure of any engine in the batch or if the total impulse of the engine class is exceeded, the entire batch will be rejected.

3.12 STATIC TEST EQUIPMENT

Static test equipment utilised for FAI certification of space model engines shall meet the following specification:

- 3.12.1 Engine thrust will be measured with the engine in horizontal position. Thrust shall be measured and recorded to an accuracy of +/- 1% of the full scale for the particular measuring range. Absolute measurement error shall not exceed +/- 0,05 N while testing engines up to 5 Ns during burning and delay time.
- 3.12.2 Thrust duration will be measured and recorded to an accuracy of +/- 0,01 sec.
- 3.12.3 Frequency response of the equipment shall be at least 100 Hertz, and the natural frequency of the equipment shall be at least 5 times this number, or 500 Hertz.
- 3.12.4 Time delay shall be measured and recorded to an accuracy of +/- 0,1 second.

3.13 SPACE MODELS ENGINE TESTING STANDARDS

A space model engine type may be certified by a National Airports Control if the performance of a randomly selected sample meets the following standards:

- 3.13.1 The total impulse of any individual engine tested should not depart more than + 0% / - 20% from the established mean value for that engine type.
- 3.13.2 The time delay of any individual engine tested should not depart more that +/- 20% from the established mean value to the engine type, and this variation for any engine should not exceed +/- 3 seconds.
- 3.13.3 No engine tested should malfunction in any manner.
- 3.13.4 Static tests shall be conducted with the test engine at a temperature of 20 degrees Centigrade, +/- 5 degrees Centigrade.

3.14 TYPE IDENTIFICATION

- 3.14.1. All space model engines accepted for use in an FAI competition shall be plainly marked on their exterior by the manufacturer at the time of manufacture with markings or codings indicating the engine's type and/or performance. Colour coding of the nozzle end of the casting indication type is recommended.
- 3.14.2 Standard markings on the exterior of the casing of a space model engine shall consist of four marks: a) producer's name or logo, b) engine class (and total impulse) marked by a capital letter in accordance with paragraph 3.1.4 of these rules, c) average thrust in Newtons (N) marked by a numeral and d) delay time in seconds (s) marked by a numeral. When the colour coding of the nozzle end is used, a producer is obliged to provide an affidavit that explains this coding with every delivered quantity of the engines that shall be submitted to the organiser at an event.

PAGE DELIBERATELY LEFT BLANK

PART FOUR – GENERAL RULES FOR INTERNATIONAL CONTESTS

See Section 4b, of Volume ABR of the Sporting Code for details. Moreover the following additions apply:

4.1 WORLD CHAMPIONSHIP EVENTS for SPACE MODELS

The following events are recognised (2001) as World Championships for Space Models:

i) W/CH for Senior classes:

- a) altitude models – S1B
- b) parachute duration models – S3A
- c) boost glider duration models – S4A
- d) scale altitude models – S5C
- e) streamer duration models – S6A
- f) scale – S7
- g) rocket glider duration and precision landing models – S8E/P
- h) gyrocopter duration models – S9A

ii. W/CH for Junior classes:

- a) altitude models S1A
- b) parachute duration models – S3A
- c) boost glider duration models – S4A
- d) scale altitude models – S5B
- e) streamer duration models – S6A
- f) scale – S7
- g) rocket glider duration models – S8D
- h) gyrocopter duration models – S9A

4.2 NUMBER OF MODELS

The number of models eligible for entry is as follows:

Class S1A, B, C, D, E, F	Two (2) only
Class S2C, E, F	Two (2) only
Class S3A, B, C, D	Two (2) only
Class S4A, B, C, D, E, F	Two (2) only
Class S5A, B, C, D, E, F	One (1) only
Class S6A, B, C, D	Two (2) only
Class S7	One (1) only
Class S8A, B, C, D, E (E/P), F	Two (2) only
Class S9A, B, C, D	Two (2) only
Class S10A, B, C, D	Two (2) only

For classes S1, S2, S3, S4, S6, S8, S9 and S10 one (1) additional model may be processed and flown by the competitor on there being a tie for first place at the end of the third round.

cont/...

4.3 LAUNCHING

Before the beginning of any Spacemodelling competition the organiser is obliged to provide conditions for competition in accordance with the provision of the FAI Sporting Code, Section 4, Volume ABR, paragraph B.12.

4.3.1 Organisation

During all operations concerned with the launching and flight of space models, all authority for the safety and conduct of operations on the flying field shall be vested in a Range Safety Officer who must be a member of a National Airports Control and who must be 18 years of age or more. Deputy Range Safety Officers who meet the above qualifications may have this authority delegated to them by appointment from the Range Safety Officer, but this delegation or partial authority does not relieve the Range Safety Officer of overall responsibility and authority on the flying field.

Adequate opportunity and facilities will be provided so that all competitors in each event at a competition may obtain engines and prepare their models simultaneously for flight under the observation of officials.

4.3.2 Flight Permission

All space models presented for operation on the flying field shall be permitted or denied flight by the Range Safety Officer or his duly authorised deputy on the basis of his considered judgement with respect to the possible safety of the model in flight.

4.3.3 Launching Device

A launching device or mechanism must be used that shall restrict the horizontal motion of the model until sufficient flight velocity shall have been attained for reasonably safe, predictable flight. A launching angle of more than 60 degrees from the horizontal must be used.

4.3.4 Assisted Launch

A launcher must not impart to the model any velocity or change of momentum except that caused by the space model engine(s) contained in the model. A launch assisted by mechanical devices built into the launcher shall not be allowed.

4.3.5 Launching Procedure

Launching or ignition must be conducted by remote electrical means at a safe distance that depends on the space model class, weather conditions and number of spectators. It shall be announced by the Range Safety Officer before the beginning of competition in a particular class of the model and must be fully under the control of the person launching the model. All persons in the vicinity of the launching must be advised that a launching is imminent before a space model may be ignited and launched, and a minimum five (5) second "count down" must be given before ignition and launching of a space model.

4.3.6 Weather Conditions

See General Rules for International Contests, Para B.14 and B.15.

4.3.7 Hazard

A space model in flight shall not create a hazard to aircraft and shall not be used as a weapon against ground or air targets.

4.3.8 Thermal Creation and Detection

No mechanical or passive methods of thermal creation are permitted (waving jackets, spreading reflective sheets, hot air blowers, motorcycles, etc.)

Ground or tethered thermal detection is permitted as long as it does not interfere with the conduct of the competition as determined by the FAI Jury.

4.4 OFFICIAL ENTRIES

4.4.1 Entry

Before the first flight in any competition event, at least one model must be inspected and marked by the judges. The next model can be inspected during the competition event. Two or more competition events may not be flown simultaneously by the same model.

4.4.2 Model Marking and Identification

Each entry shall carry, prominently displayed upon its body, fins, or other exterior part, the competitor's FAI license number or FAI Unique ID number in letters and numbers approximately one (1) centimetre high except in classes S5 and S7 where it is 7 mm for the 1st stage and 4 mm for upper stages. The name, national insignia, or international identification mark (see Section 4b, Annex B.2) of the competitor's nation must be displayed on the exterior of the model.

A light coloured area of minimum dimensions 1 cm by 3 cm must be provided for the organiser's processing mark except in classes S5 and S7 where the mark shall be put on interior of the model.

4.4.3 Builder of the Model

The judges shall make every reasonable effort to insure that each competitor has completely constructed the model entered in the competition with "construction" to be interpreted as the action required to complete a model starting with no more prefabrication than the amount used in the average kit. Models that are completely prefabricated or require only a few minutes of unskilled effort for their completion shall be excluded from competition. Materials and design may be obtained from any source, including kits. The competitor must himself prepare his model for flight assisted by one helper, who must be a junior in junior classifications.

4.5 OFFICIAL FLIGHTS

4.5.1 Definition of an Official Flight

A flight is considered official if the model or any part of the model leaves the launching device, loses contact with the launching device after ignition, or becomes airborne, except in the case of a catastrophic failure according to the provisions of Rule 4.6.3., in which case the flight is not considered official.

4.5.2 Number of flights

In each event, except Scale (S7), each competitor shall be given an opportunity to make three (3) official flights, time and weather permitting. In Scale (S7) two (2) opportunities will be given, time and weather permitting.

4.5.3 Definition of an Unsuccessful Attempt

An attempt is classed as unsuccessful if the model or any part of the model leaves the launching device and at least one of the following events occur:

- a) model collides with another model during the flight,
- b) proven frequency interference for radio controlled models,
- c) catastrophic failure according to the provisions of the rule 4.6.3,
- d) "no close" or "track lost" for altitude models.

If this happens on the first attempt then the competitor is entitled to the second attempt.

4.5.4 Definition of a Re-flight

A competitor shall be allowed a re-flight when he is prevented from making an official flight through no fault of his own. In such cases he or his team manager should notify the RSO immediately. Permission for a re-flight shall be given by the RSO, or in case of a protest, by the FAI Jury. A re-flight shall be made under flight conditions similar to those under which the other official flights for that class were made, but before the official results are announced.

4.6 DISQUALIFICATION

4.6.1 Judges may disqualify any model at any time which, in their opinion, does not comply with the competition rules or which the Range Safety Officer or his authorised deputy feels may not be reasonably safe in operation.

4.6.2 Judges may disqualify any competitor on the grounds of failure to practice or observe reasonable safety measures, published or otherwise, for poor sportsmanship, for failure to abide by the orders of the Range Safety Officer or his authorised deputy or for misconduct in general.

4.6.3 A model experiencing a catastrophic failure which, in the opinion of the judges, was not due to or caused by improper design, construction, or pre-flight preparations of the model, shall not be disqualified from competition. A model suffering such a catastrophic failure and thereby rendered incapable of additional flights may be replaced by another model. For Scale models S5 and S7, experiencing a catastrophic failure, see rule 9.12.

- 4.6.4. By reason of flight characteristics, a model may be disqualified for a flight but is not necessarily disqualified for the entire event.

4.7. RADIO CONTROLLED SPACE MODELS

- 4.7.1. For transmitter and frequency control see Volume ABR, Section 4b, paragraph B.11.
- 4.7.2. Competitors must be called at least five minutes before they are required to occupy the starting area.
- 4.7.3. Once the competitor has been given permission to start, he may delay no longer than one minute before attempting launching.
- 4.7.4. If using an am/fm transmitter, the competitor must have ability to fly on at least two frequencies.
- 4.7.5. In World and Continental Championships because of increased safety, reduced harmful radio-interferences and simplified organisation of the RC events, spread spectrum 2.4 GHz radio devices are strongly recommended. When all the RC radio devices are spread spectrum 2.4 GHz, they must not be impounded.

4.8. TIMING AND CLASSIFICATION

- 4.8.1. See Volume ABR, Section 4b, paragraph B.13.
- 4.8.2. The timing of flights is limited to a maximum determined by the individual class and size of engine used. The total flight time is taken from the model's first motion on the launching device to the end of the flight.
- 4.8.3. The total time of the three flights of each competitor is taken for the final classification unless otherwise defined by the rules of a particular class.
- 4.8.4. In order to decide the winner when there is a tie, additional deciding flights shall be made immediately after the last flight of the event has been completed. The maximum time of flight in each additional round shall be increased by two (2) minutes on the maximum time of flight of the previous round. There shall be only one attempt for each additional flight. The times of the additional flights shall not be included in the final figures of classification for teams, they are for the purpose of determining the winner and for awarding the prizes attached to the title. The organiser will decide the time during which all competitors must launch their models. In the case of a tie in the team classification, the best individual score (classification) will be used.
- There shall be no more than two fly-off rounds to determine the winner. The second fly-off round will be timed to the completion of the flight for final results.
- 4.8.5. For World and Continental Championships a round is defined as the amount of time allocated by the organiser for a national team to prepare and launch their models for one official flight per team member (one hour is recommended).

4.9. ALTITUDE DATA

For measuring and calculating altitudes, the methods that may be used are based on the principles of triangulation, or electronic or radar tracking.

4.9.1 Triangulation Method

4.9.1.1 Tracking

All models in any event for which an achieved altitude figure is scored shall be tracked in flight be at least two (2) calibrated measuring devices which are situated on a measured baseline of at least three hundred (300) metres. The distance to the launch pad shall be a minimum of 2/3 (two thirds) of the current world record rounded to the nearest lower 100 metres.

At world championships, a redundant tracking system shall be implemented with four measuring devices (Theodolites), two at each tracking station. The best tracking pair will be designated as the primary trackers and their data will be used first. If the primary trackers fail, the data from the secondary trackers will be used. If they fail, the combination of azimuth and elevation from each tracking station will be used.

For models with engines over 20 Newton-seconds the base line must be a minimum of 450 metres. The distance from the launch site to the centre line of the base line must be 1/2 the base line length.

The distance to the launch pad shall be at least 300 m for models with up to 2,5 Ns impulse. The launch site must be seen from the measuring devices.

4.9.1.2 Tracking Accuracy

The measuring devices must be able to measure angles in both the horizontal (azimuth) and vertical (elevation) axes and shall have a minimum accuracy of +/- 0,5 degrees in both azimuth and elevation.

4.9.1.3 Tracking Procedure

A model for which an achieved altitude figure is required will be tracked aloft visually by measuring device operators manning each tracking device until they see that the model has reached the maximum vertical altitude of its flight. The angle of azimuth from the baseline and the angle of elevation from the horizontal shall then be read to the nearest degree of arc and reported to the launching area.

Angular data thus recovered from tracking will be reduced to altitude data by use of the principles of triangulation.

4.9.1.4 Computed Altitude

The computed altitude from each station's reduced altitude data must be within ten percent (10%) of the average altitude computed utilising data from both stations. Computed station altitudes not falling within 10% of the average computed altitude will result in a "no close" (NC) for the model. All altitudes will be rounded-off to the nearest metre before this "10% rule" is applied. The official scored altitude is the computed average altitude.

A "Track Lost" (TL) is recorded where the trackers are unable to determine the position of the model sufficiently to obtain any angles.

A zero is recorded if the flight path is erratic, unpredictable, malfunctions or the flight is disqualified for safety reasons.

In the event of a "No Close" (NC) or a "Track Lost" (TL) for the model, the competitor may be allowed to fly again until the end of the round. The organiser is obliged to announce altitude calculations of each flight not more than ten minutes after the launch, to leave modellers whose flights are considered "No Close" (NC) or "Track Lost" (TL) enough time to make another flight in the same round. A safety disqualification or a model malfunction making the model difficult to track will result in a "zero" for the flight.

4.9.1.5 Visibility of Models

All models that are to be tracked for altitude shall disperse a coloured powder at ejection which will aid tracking. Theodolite operators may lose track of models which do not contain sufficient powder or contain powder which does not contrast well with the sky. The organiser will have tracking powder available for competitor's use.

4.9.2 Electronic or Radar Tracking

Altitude data derived from electronic or radar devices is valid only if evidence is presented regarding proper calibration and correction.

4.9.2.1 Electronic altitude measurements

Electronic altimeter carrying requirements and application:

- a) An electronic altimeter carried in a space model shall be completely enclosed and contained within the model, so as to be removable. It shall not be capable of separating from the model in flight.
- b) An electronic altimeter shall fulfil the following technical specifications:
 - Must use barometric measurement technique.
 - Must record, as the flight altitude, the difference between peak altitude achieved and the altitude of the pad from which it was launched.
 - Have a data readout resolution of 1 metre or better.
 - Have a measurement accuracy of 2% of the recorded altitude or 2 metres, whichever is greater.
 - Have a data sampling rate of 10 samples per second or greater.
 - Must be able to register the whole trajectory during the flight that can be reproduced, measured and compared with other flights on a lap-top computer with use of standardised software.

cont/...

- Must be able to eliminate, by filtering, the influences of side winds and other disturbances in flight.
 - Must have adjustable time delay from 0–300 s to prevent the start of measurements before the device is inserted into a model and launched.
 - For FAI Category 2 events, simpler devices may be used that give the data readout of peak altitude by numbers on its hand held reader or by audio or visual means directly from the altimeter, with no external device required.
 - Must be capable of being completely cleared of all previous flight data before flight.
- c) The technical specifications of this equipment and container shall be announced in the local rules for each altitude contest.
- d) All electronic altimeters shall be impounded before the start of the event, kept safe by an official and checked and calibrated by the judges, or a qualified calibrating team, equipped with the relevant electronic equipment.
- e) Competitors shall take checked and calibrated electronic altimeters from the pound and mount them on the model under the supervision of the judges. The competitor shall return the electronic altimeter to the judges as soon as possible after the flight has finished for readout data and recheck or recalibration if the judges find that necessary.

4.9.2.2. Radar Altitude Measurements

Subject to the radar equipment to be used for radar altitude measurements, the organiser of the event shall announce a special request for the type of reflective surface or responders to be used in a particular event.

PART FIVE - ALTITUDE COMPETITION (CLASS S1)

5.1. DEFINITION

In any altitude competition event, the model achieving the highest maximum altitude as measured and/or calculated shall be declared the winner.

5.2. ALTITUDE DATA

ALTITUDE DATA rules 4.9 will be used for this competition.

5.3. SUB-CLASSES

Altitude competition shall be divided into classes based upon the maximum allowable gross launching weight of the model and the maximum permissible total impulse of the engine or engines powering the model. Any number of engines may be used in any arrangement provided that the sum of the total impulses of the individual engines does not exceed the allowable total impulse maximum for the competition class.

The following event classes are in effect for altitude competition:

CLASS	TOTAL IMPULSE (Newton-seconds)	MAXIMUM WEIGHT (g)
S1A	0,00 - 2,50	60
S1B	2,51 - 5,00	90
S1C	5,01 - 10,00	120
S1D	10,01 - 20,00	240
S1E	20,01 - 40,00	300
S1F	40,01 - 80,00	500

5.4. CLASSIFICATION

Every competitor shall be given three opportunities to make official flights. The best out of three flights shall be taken for classification. In case of a tie, the second or even the third flight shall be decisive. If the tie remains, competitors shall be allowed to make an additional flight and they may use a new model.

PAGE DELIBERATELY LEFT BLANK

PART SIX - PAYLOAD COMPETITIONS (CLASSES S2 & S2/P)**6.1. CLASS S2 (PAYLOAD ALTITUDE COMPETITION)****6.1.1 DEFINITION**

This event is open to models that carry one or more standard FAI space model payloads to the highest altitude as tracked and reduced or to a target altitude in a specified time.

6.1.2. STANDARD FAI PAYLOAD SPECIFICATION

The Standard FAI space model payload is a cylinder, sphere or ellipsoid of any modelling or natural material according to paragraph 2.4.3. The organiser may define, by local rules, the sophistication of the payload (photo, movie camera or electronic equipment) and to add optional tasks.

6.1.3. PAYLOAD CARRYING REQUIREMENTS

The standard FAI space model payload or payloads carried in a model shall be completely enclosed and contain within the model, shall be removable from the model, and shall not be capable of separating from the model in flight.

6.1.4. MODEL RECOVERY REQUIREMENTS

Models in this event must contain for recovery purposes parachutes of sufficient size to allow a safe landing under the provisions of Paragraph 2.4.1.

6.1.5. DISQUALIFICATION

A model's official flight will be disqualified if the payload separates during flight or landing and thereby becomes separated from the model.

6.1.6. ALTITUDE DATA

ALTITUDE DATA rules 4.9 will be used for this competition.

6.1.7. SUB-CLASSES

This competition will be divided into classes based upon maximum allowable gross launching weight, number of standard FAI space model payloads carried, and maximum permissible total impulse of the engine or engines. The following classes of FAI space model payload competition are established:

CLASS	TOTAL IMPULSE (Newton-seconds)	MAXIMUM WEIGHT (g)	NUMBER OF PAYLOADS CARRIED
S2C Single	5,01 - 10,00	90	1
S2E Dual	20,01 - 40,00	180	2
S2F Open	40,01 - 80,00	500	4

6.2. CLASS S2/P PRECISION FRAGILE PAYLOAD COMPETITION

6.2.1 Definition/Description

This event provides a precision performance challenge in both altitude and duration for single-stage space models that are carrying a fragile payload (as a raw egg or a small fragile plastic/glass container filled with liquid). The objective is to come as close as possible to the target altitude of 300 meters and a flight duration of 60 seconds in each of three flights with one model without breaking the payload.

6.2.2. Model Requirements

Each contestant may enter only one model. The model shall have one stage but may have any weight that is in compliance with the FAI SC4 Volume SM paragraph 2.1 and any combination of engines that is in compliance with paragraph 2.2. It must contain and wholly enclose a fragile payload throughout the flight. It must use one or more parachutes as its sole recovery device. No form of external control may be used to regulate duration. During the flight no part of the model other than parachute protectors or wadding may be detached or jettisoned.

6.2.3. Payload Requirements

The fragile payload shall be in diameter than 45 +/- 5 millimetres and shall be between 60 +/- 3 grams in weight. One fragile payload shall be provided to the contestant before the first flight, flown on each flight, and inspected after the final flight.

6.2.4. Disqualification

If there is any external damage to the fragile payload when it is inspected after the contestant's final flight, the contestant shall be disqualified from the event.

6.2.5. Scoring

The score for each flight shall be the absolute difference between the recorded altitude and 300 meters (always a positive number) plus 3 times the absolute difference between the recorded duration and 60 seconds (always a positive number). Any flight which is disqualified for a reason other than a broken fragile payload, or which receives no altitude score, shall receive a score of 100 for that flight. The score for the event shall be the sum of the scores from each of the three flights. The lowest score is the winner. In the case of tie the best (the lowest score) in a round is decisive.

The following scoring formula shall be used for point allocation:

$$B = \text{INT}(H-300) + 3 * \text{INT}(T-60),$$

where B = points awarded to the competitor,

H = flight altitude of the model (meters),

T = flight time of the model (seconds).

INT = Integer function in MS-Excel software

6.2.6. Model Processing and Precautions

Every model entered into this competition shall be inspected and marked before the first flight by the judges according to the SC4 Volume SM paragraph 4.4.1. For safety reasons, at the request of the judges, the contestant must present data regarding the locations of the centre of gravity, centre of pressure, gross weight, burnout weight and/or calculated or measured flight performances of the model in accordance with the SC4 Volume SM paragraph 2.4.5.

PART SEVEN - PARACHUTE/STREAMER DURATION COMPETITION (CLASSES S3 AND S6)**7.1. GENERAL**

The Parachute or Streamer Duration Competition is divided into classes according to the total impulse of the engine used. During the flight no part of the model other than parachute protectors or wadding may be detached or jettisoned.

7.2. SPECIFICATIONS**7.2.1. Parachute Duration Models**

The Parachute Duration Competition is open to models that are single-staged, powered by a single space model engine, containing one or more parachutes for recovery purposes. The parachute(s) must be provided with a minimum of three (3) shroud lines. A competitor may change the recovery parachute(s) in a model at any time during the competition.

7.2.2. Streamer Duration Models

The Streamer Duration Competition is open to models that are single-staged, powered by a single space model engine, containing one streamer for recovery purposes. The streamer must be a single homogenous unperforated rectangle of flexible material i.e. fabric, tissue or plastic foil with a length to width ratio of 10:1 minimum. At the narrow end of it a rigid support of 2 mm x 2 mm maximum cross-section together with a loop of thread attached at each end of the support may be used to attach the streamer to the model's single shroud line. The streamer must completely unfurl during the flight. A competitor may change the streamer in a model at any time during the competition.

7.3. TIMING AND CLASSIFICATION

Timing and Classification Rules 4.8 will be used for this competition.

7.4. SUB-CLASSES

For Parachute and Streamer Duration Competitions the classes and their respective maximum flight times are:

CLASS	TOTAL IMPULSE (Newton-seconds)	MAXIMUM WEIGHT (g)	MAXIMUM PARACHUTE (sec)	FLIGHT TIME STREAMER (sec)
S3A/S6A	0,00 - 2,50	100	300	180
S3B/S6B	2,51 - 5,00	100	420	240
S3C/S6C	5,01 - 10,00	200	540	300
S3D/S6D	10,01 - 20,00	500	660	360

PAGE DELIBERATELY LEFT BLANK

PART EIGHT - BOOST/GLIDE DURATION COMPETITION (CLASS S4)**8.1. DEFINITION/DESCRIPTION**

This competition comprises a series of events open to any free flight space model that ascends into the air without use of lifting surfaces which sustain the entry against gravity during that portion of flight when it is being subjected to or accelerated by thrust from its space model engine; and that returns its glider portion to the ground in stable gliding flight supported by aerodynamic lifting surfaces which sustain the portion against gravity. The intent of this competition is to provide a sporting competition for space models with gliding recovery. Space models that ascend into the air in a spiralling climb under rocket power in such a manner that they are supported during their rise by wings shall not be eligible for entry in this competition.

Any model that qualifies as a flex-wing (Rogallo) rule 13.1.1 is not eligible for this event.

Any model that qualifies as a radio controlled model rule 11.5 is not eligible for this event.

8.2. PURPOSE OF COMPETITION

The purpose of the competition is to determine which model achieves the longest time of flight utilising a vertical or near vertical free-ballistic flight pattern under power within a 60 degree cone centred vertically on the launcher and a stable aerodynamic glide recovery. Each model will be timed from the instant of first motion on the launcher until the instant the gliding top portion touches the ground.

8.3. TIMING AND CLASSIFICATION

Timing and Classification Rules 4.8 will be used for this competition.

8.4. SUB-CLASSES

For Boost/Glider Duration Competitions the classes and their respective maximum flight times are:

CLASS	TOTAL IMPULSE (Newton-seconds)	MAXIMUM WEIGHT (g)	MAXIMUM FLIGHT TIME (sec.)
S4A	0,00 - 2,50	60	180
S4B	2,51 - 5,00	90	240
S4C	5,01 -10,00	120	300
S4D	10,01 -20,00	240	360
S4E	20,01 -40,00	300	360
S4F	40,01 -80,00	500	360

PAGE DELIBERATELY LEFT BLANK

PART NINE - SCALE COMPETITION (CLASS S7)

9.1. DEFINITION

Scale competition is a single event and is limited to flying space models that are true scale models of existing or historical guided missiles, rocket vehicles, or space vehicles.

9.2. MULTI-STAGE PROTOTYPE

If the entry is a scale model of a multi-staged vehicle, it may be designed so that one or more of the upper stages are inoperable dummies. However, the upper stage of a multi-staged vehicle may not be entered and flown without its operable lower stages unless specific data is furnished to the judges to prove that the upper stage configuration was designed to be or has flown separately, alone, and as a vehicle itself. For example, all Aerobee rockets must have operable boosters.

9.3. SELECTION OF PROTOTYPE

The competitor must have modelled one particular serial-numbered prototype, except in the case where the prototype is in such large mass production that there is no single individual vehicle that can be singled out for scale modelling purposes. However, the competitor shall make every reasonable attempt to model a specific prototype.

9.4. PROOF OF SCALE

The competitor must supply scale data to substantiate his model's adherence to scale in dimension, shape, colour, and point pattern. Minimum allowable data consists of length and diameter of the prototype and one photograph. Further data is certainly encouraged. Dimensional data must be from an accurate source such as magazines, books, manufacturer's specifications or data sheets, etc. Photographs from any sources are acceptable. All data presented should apply to the particular prototype that is modelled and entered. Judges may deduct points for incorrect data.

9.5. KITS

Flying scale space model kits may be used as a source of design, materials, etc. and acceptable for entry only if accompanied by scale substantiation data other than that contained in the kit or available from the kit manufacturer. The competitor shall be responsible for ascertaining the correct scale qualities of the kit and must present satisfactory evidence that the kit model is correct to scale.

9.6. STABILISING FINS

Scale models of rockets, missiles or space vehicles that are not fin-stabilised may be fitted with transparent plastic fins so as to make the model stable in flight while detracting the least from the scale qualities of the model

9.7. PLASTIC MODEL KIT PARTS

Parts from plastic model kits may be used on scale space models provided that this use is pointed out in the data presented with the model at the time of judging for scale qualities.

9.8. CONDITIONS OF MODEL FOR JUDGING

Models will be judged for scale qualities in flight condition minus space model motors. All clear plastic fins, launching lugs, and fittings and other flight items must be attached to the model for scale judging. Nothing may be added to or taken off the model between the scale judging and the flight except space model motors and recovery device packing.

9.9. MAXIMUM WEIGHT AND IMPULSE

Maximum allowable gross launching weight is limited to 1500 grams.

Maximum allowable total impulse is 160,00 Newton-seconds. Maximum engine size allowed is 80 Newton-seconds.

cont/...

9.10. NUMBER OF FLIGHTS

Each entry must make a stable flight, and two (2) opportunities will be available to the competitor for this purpose, time and weather permitting.

9.11. SCALE JUDGING

Scale quality points will be awarded to each entry according to the following schedule:

- 9.11.1. A competitor who presents the following proper technical data may be awarded with points defined in the paragraphs below only for items documented in these technical data:
- authentic, authorised drawing(s) of the prototype with at least ten dimensions and three cross sections, i.e. data which define colour of cross sections and markings on it;
 - workshop drawing of scale model - scale 1:1;
 - at least one colour photograph of the whole prototype with clearly visible details of colour and markings;
 - at least three photographs of details and assemblies;
 - file containing all necessary technical data including data regarding the locations of the centre of gravity, centre of pressure, gross weight, burnout weight and/or calculated or measures flight performance of the model necessary for safety reasons.
- 9.11.2. **Adherence to scale:** 200 points maximum. To be considered as a scale model the dimensions of the body diameter and overall length should not depart from scale by more than 10% or else the model is disqualified. This rule shall not be applied to dimensions less than 10 mm. The judging category should be judged in two areas: 1) model dimensions - 150 points maximum; 2) colour and markings - 50 points maximum.
- 9.11.3. **Workmanship:** 250 points maximum. To be judged on neatness, care of construction, and degree of finish. The judging category will be judged in two areas: 1) workmanship of nose cone, body, fins and details - 150 points maximum; 2) finish of nose cone, body and fins - 100 points maximum. Deviations from scale finish such as a high gloss finish on a model that should have a flat or dull finish will detract from maximum points.
- 9.11.4. **Degree of difficulty:** 150 points maximum. To be judged on the degree of difficulty involved in constructing the model up to 110 points. Factors to be considered include symmetry of model; number of external components; intricacy of paint pattern; degree of detailing; and degree of difficulty in adapting the model for flight conditions. A bonus of 40 points for “originality” shall be awarded to a prototype that is the only one in the competition and a bonus of 20 points shall be awarded if two prototypes of the same kind enter the competition. No bonus points shall be awarded if there are three or more models of the same kind.
- 9.11.5. **Flight, characteristics:** 300 points maximum. To be judged on launch, stability of flight, staging (if any) and recovery. A competitor has to designate which operations his models are to perform in flight (eg separation of stages; radio controlled trajectory; ejection of payload, etc).
- If the model has been disqualified in both official flights, the competitor will not be eligible for final classification.
- 9.11.6. In the case of World and Continental Space Modelling Championships dimension deviations from the Scale shall be measured by a separate qualified measuring team approved by the FAI Jury. The measured dimensions will be presented to the Scale Judges for verification and included with the Scale Judging Data.
- 9.12. Should the model experience a catastrophic failure, be incapable of additional flights (4.6.3.) and have scored no Flight Characteristic points, the competitor’s static scale points will be taken to decide final classification.

PART TEN - SCALE ALTITUDE COMPETITION (CLASS S5)**10.1. DEFINITION**

This series of events involves altitude competition with scale space models and is a combination of the altitude competition (Part 5) and the scale competition (Part 9). The objective of the competition is to achieve the highest altitude with a scale space model.

10.2. RULES

All entries must comply with the rules of Scale competition (Part 9) and will be judged under the same rules and receive the same number of maximum scale quality points except that three flights will be allowed and no flight characteristics points will be given.

ALTITUDE DATA rules 4.9 will be used for this competition.

10.3. SCORING

The total number of scale quality points awarded to an entry will be added to the highest official altitude achieved by the entry. Only in the case of “no close” or “track lost”, no altitude points are added but the flight is considered qualified and the competitor’s static points will be taken to decide the final classification. Otherwise, if the model does not make a qualified flight after three attempts, the final classification will be zero.

The entry having the largest number of total points resulting from adding the static scale quality points to the altitude in metres achieved from the same flight, will be declared the winner. In the event of a tie, the points gained for scale quality will be decisive.

10.4. DISQUALIFICATION

The judges must disqualify from scale altitude competition any entry which, in their opinion, does not show sufficient scale qualities or evidence of normal level of workmanship required for a scale model under the provisions of the scale competition (Part 9). The intent of this rule is to eliminate from scale altitude competition any entry which has scale qualities grossly subordinated in favour of altitude performance qualities.

10.5. SUB-CLASSES

Scale Altitude Competition may be flown in the following classes:

CLASS	TOTAL IMPULSE (Newton-seconds)	MAXIMUM WEIGHT (g)
S5A	0,00 - 2,50	90
S5B	2,51 - 5,00	120
S5C	5,01 - 10,00	150
S5D	10,01 - 20,00	180
S5E	20,01 - 40,00	240
S5F	40,01 - 80,00	500

PAGE DELIBERATELY LEFT BLANK

PART ELEVEN - ROCKET GLIDER DURATION COMPETITION (CLASS S8)

11.1 GENERAL

- 11.1.1. Rocket Glider Duration Competition comprises a series of events open to any single-staged rigid-winged, radio-controlled space model which returns to the ground in stable, gliding flight supported by aerodynamic lifting surfaces which sustain it against gravity. The model must utilise a vertical or near-vertical ballistic take-off and a stable aerodynamic glide recovery without any separation or discarding of engine casing(s).
- 11.1.2. Any model that qualifies for flex-wing rules 13.1.1 or 13.2 is not eligible for this event.

11.2. PURPOSE

The purpose of this competition is to achieve the longest flight duration time in combination with a landing of any part of the model within a given landing area of 20 by 20 metres.

11.3. DISQUALIFICATIONS:

- 11.3.1. Any entry which, under any circumstances or in any manner, separates into two or more unattached pieces, or discards its engine casing(s) shall be disqualified.
- 11.3.2. Any entry that is supported by aerodynamic lifting forces in such a manner that it ascends in a climb not substantially vertical, within a 60 degree cone centred vertically on the launcher while under rocket power shall be disqualified from this competition.
- 11.3.3. Any entry that descends with parachute and/or streamer recovery device(s) attached shall be disqualified.
- 11.3.4. During the powered phase of flight, spinning or looping of the entry is permitted only around the roll axis or a parallel axis. Entries which spin or loop around the pitch or yaw axis shall be disqualified.

11.4. TIMING AND CLASSIFICATION

- 11.4.1 Timing and Classification Rules 4.8 will be used for this competition.
- 11.4.2 The model shall be timed from the instant of first motion on the launcher until the instant it touches the ground.
- 11.4.3 One point will be awarded for each full second of flight time up to the class maximum listed in rule 11.6.
- 11.4.4 60 additional points will be awarded if any part of the model lands within the 20 by 20 metres landing zone. During landing, if the model hits the pilot or their helper, or the pilot stops the model, no additional points will be awarded for landing.
For each flight, the total score is compiled by adding points from flight time and additional points for landing.
- 11.4.5 For the fly-off in classes S8E and S8F the jury shall determine the maximum time of flight (but not exceeding 30 minutes) for a round according to the meteorological conditions and the character of the flying site. The maximum must be announced before the start of the round.

11.5. RADIO CONTROLLED FLIGHT

- a) The models in Class S8 subclasses S8A to S8F must be radio controlled. Rule 4.7 applies.
- b) The pilot shall be disqualified from the flight if he moves away from the area marked by the organiser.
- c) The contest director is responsible for determining the landing field. Any changes of the indicated landing area are forbidden during the round. The landing area must be located at a place on the field where there is no danger of collision with any person during the landing of the models.

11.6. SUB-CLASSES

CLASS	TOTAL IMPULSE (Newton-seconds)	MAXIMUM WEIGHT (g)	MINIMUM WING SPAN (mm)	MAXIMUM FLIGHT TIME (sec)
S8A	0,00 -2,50	60	500	180
S8B	2,51- 5,00	90	650	240
S8C	5,01- 10,00	120	800	300
S8D	10,01- 20,00	300	950	360
S8E & S8E/P	20,01 -40,00	300	1100	360
S8F	40,01 80,00	500	1250	360

11.7. CLASS S8E/P RADIO CONTROLLED ROCKET GLIDER TIME DURATION AND PRECISION LANDING COMPETITION

11.7.1. PURPOSE

The purpose of the competition is to achieve as exactly as possible the given time of 360 seconds and to precisely land the model in a specified landing circle of 10 meters radius.

11.7.2. SPECIFICATIONS

The competition has only one subclass determined for models which comply with subclass S8E. Total impulse of engine(s) 20,01 to 40,00 is allowed.

The radio shall be able to operate simultaneously with other equipment at 20 kHz spacing. Where the radio does not meet this requirement, the working bandwidth (Maximum 50 kHz) shall be specified by the competitor.

11.7.3. LANDING AREA

Before the start of each round the organiser must provide:

- a) An appropriate number of non-extensible measuring tapes marked every one metre. The number will be determined by the maximum number of flyers in a group.
- b) A landing area consisting of the appropriate number of 10 metre landing circles, laid out square to the wind direction and with the marked landing tapes pinned down at the centre of each circle. The contest director is responsible for determining the direction and layout of the circles. Any changes of indicated landing area are forbidden during the round. The landing area must be located at a place on the field where there is no danger of collision with any person during the landing of the models.

11.7.4. TIMING AND CLASSIFICATION

11.7.4.1. Section 4b, (General rules) B.12 applies to this competition.

11.7.4.2. The model shall be timed from the instant of first motion on the launcher until the instant it touches the ground.

11.7.4.3. The timekeepers must remain within a radius of approximately 10 metres from competitors during the flights and time the flights independently of each other. After the landing, the timekeepers must determine the point at which the nose of the model came to rest and award additional points for landing in accordance with 11.7.4.6 provided the claim is justified.

11.7.4.4. One point will be awarded for each full second of flight time up to a maximum of 360 points (that is, 360 seconds maximum).

11.7.4.5. One point will be deducted for each full second flown in excess of 360 seconds.

11.7.4.6. Additional points will be awarded for landing:

When the nose of the model comes to rest within one metre of the centre of the designated landing circle, 100 points will be given. 10 points are deducted from the maximum of 100 points for every further metre from the centre. If the nose of the model lands between marks it is the lower of the marks that counts.

No additional points will be awarded if the landing occurs 390 seconds after the start or if the model lands outside of the designated landing circle. If, on landing, the model hits the pilot or his helper, or the pilot stops the model, no additional points will be awarded for landing.

For each flight, the total score is compiled by adding points for flight time and additional points for landing.

11.7.4.8. The winner of a particular flight in the relating group receives a score of 1000 points. Other competitors receive points as follows:

$$P_c = 1000 \times \frac{R_c}{R_w}$$

where P_c = points of the competitor
 R_w = result of the winner in the relating group
 R_c = result of the competitor

11.7.4.9. The five competitors with the highest scores after three starts qualify for the final round.

There will be one final flight for a group consisting of all participants of the final round.

If there is a frequency conflict, the competitor with the worst score in three qualifying flights must change the frequency of his radio.

11.7.4.10. The final classification will be determined by the sum of all flight scores of each competitor.

When there is a tie, the best score of one round shall be used to determine the individual winner. If a further tie occurs, the second best score of one round shall decide the winner.

11.7.5. ORGANISATION OF STARTS

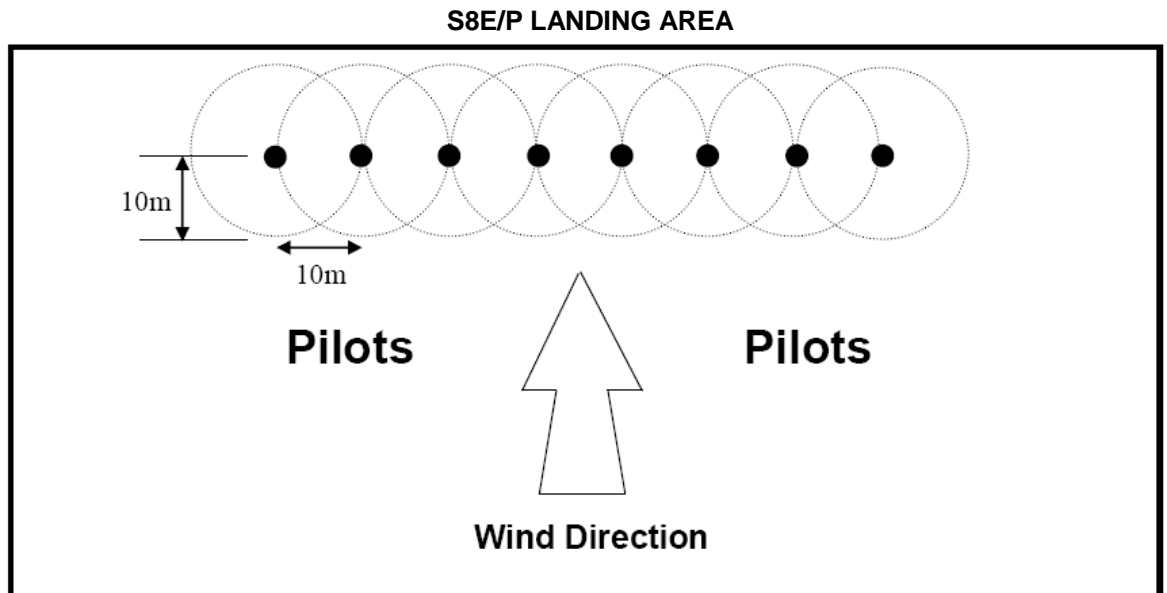
11.7.5.1. Competitors shall be combined in groups by draw in accordance with radio frequencies used to permit as many flights simultaneously as possible. For this competition, there must be a minimum of three competitors in a group. The draw is organised in such a way that, as far as possible, there are no competitors of the same nation in the same group. The flying order of the different groups is also established with a draw. A different composition of groups shall be used for each round.

11.7.5.2. Each group is entitled to three minutes of preparation time before the starter gives the order to count off the working time.

11.7.5.3. Each group of competitors has 14 minutes of working time to collect transmitters from the official, perform an official flight and return the transmitters to the official. In the case of the working time being exceeded (a delay in returning the transmitter to the official), the competitor will be disqualified for the round.

Note: Working time can be repeated at the Contest Director's discretion for any unforeseen reason outside the competitor's control (for example, radio interference). The working time shall be repeated immediately after the end of the current round.

11.7.5.4. The starting order of competitors in each group will be determined from the order in which competitors announce their start to the range safety officer. In the case of a misfire, the competitor is allowed to repeat the start only after the attempts of all competitors registered for start at the time of his attempt.



In normal situations the circles will overlap each other but the centres should never be closer than 5 metres apart. In normal practice, the circle centres should be 10 metres apart as in the diagram above. A competitor (pilot) and one helper may stay at the landing area either inside or outside the landing circles.

PART TWELVE – GYROCOPTER DURATION COMPETITION (CLASS S9)

12.1. GENERAL

Gyrocopter Duration Competition comprises a series of events open to any single-staged space model which uses the principle of auto-rotation as the sole means of recovery.

12.2. PURPOSE

The purpose of this competition is to achieve the longest flight duration using an auto-rotating recovery system.

12.3. SPECIFICATIONS

- 12.3.1. Each entry must be decelerated during descent by its auto-rotating recovery device. The resulting autorotation must be around the roll axis of the auto rotating recovery device and must be the result of proper deployment and operation of the recovery system.
- 12.3.2. Flexible materials can only be used for covering rigid support members. The recovery system shall not be constructed solely, or in part, of flexible materials and rigging (e.g., a parachute with rigid stringers or folding rotors of flexible materials between rigid stringers). entries using a recovery system which is designed to act (or which actually acts) in a manner similar to a parachute, a rigid inverted bowl, or similar techniques are specifically excluded from this competition.
- 12.3.3. The entry may not separate into two or more unattached parts, and shall be disqualified if it does so.
- 12.3.4. The 50% requirement of Rule 2.4.3. applies.

12.4. TIMING AND CLASSIFICATION

Timing and classification rules 4.8 will be used for this competition.

12.5. SUB-CLASSES

CLASS	TOTAL IMPULSE (Newton-seconds)	MAXIMUM WEIGHT (g)	MAXIMUM FLIGHT TIME (sec.)
S9A	0,00 - 2,50	60	180
S9B	2,51 - 5,00	90	240
S9C	5,01 - 10,00	150	300
S9D	10,01 - 20,00	200	360

PAGE DELIBERATELY LEFT BLANK

PART THIRTEEN - FLEX WING DURATION COMPETITION (CLASS S10)

13.1. GENERAL:

- 13.1.1. Flex-wing (Rogallo) duration competition comprises a series of events open to any single-staged space model which returns to the ground in stable, gliding flight supported by flexible aerodynamic lifting surfaces which sustain it against gravity.
- 13.1.2. The model must utilise a vertical ballistic take-off and achieve a stable aerodynamic glide recovery without any separation of parts or discarding of engine castings(s).

13.2. CONSTRUCTION:

The aerodynamic lifting surfaces must be constructed from flexible materials such as fabric, tissue, or plastic foil. Ribs, spars, stringers, and the remainder of the model may be of any material in accordance with requirements of Rule 2.4. The 50% requirement of Rule 2.4.3 applies.

13.3. DISQUALIFICATION

- 13.3.1. Any entry which, under any circumstances or in any manner separates into two or more unattached pieces, or discards its engine casing(s) shall be disqualified.
- 13.3.2. Any entry that is supported by other than flexible aerodynamic lifting surfaces or ascends in a climb not near vertical while under rocket power shall be disqualified from the competition.
- 13.3.3. Any entry that descends with parachute or streamer recovery device(s) attached shall be disqualified.

13.4. TIMING AND CLASSIFICATION

Timing and Classification Rules 4.8 will be used for this competition.

13.5. RADIO CONTROLLED FLIGHT:

The model may be radio controlled to maintain its flight path in the vicinity of the launch site. Rule 4.7 applies.

13.6. SUB-CLASSES

CLASS	TOTAL IMPULSE (Newton-seconds)	MAXIMUM WEIGHT (g)	MAXIMUM FLIGHT TIME (sec.)
S10A	0,00 - 2,50	60	180
S10B	2,51 - 5,00	90	240
S10C	5,01 - 10,00	120	300
S10D	10,01 - 20,00	240	360

PAGE DELIBERATELY LEFT BLANK

PART FOURTEEN - SPACE MODEL RECORDS

14.1. GENERAL

All FAI space model performance records must be established in or at FAI first or second category sporting events listed in the FAI Sporting Calendar and organised by the National Airsports Control or its affiliate in accordance with this Sporting Code if the weather conditions and schedule of the event permits.

Established records, for any class of model for which new rules or rule changes apply, such that the performance of that class of models is affected in any way, shall be retired whenever those new rules or rule changes become effective.

14.2. SURPASSING PREVIOUS RECORD

Attempts to surpass an established record must exceed by one percent (1%) the value of the established record performance.

All models used for establishing or surmounting of the existing record must correspond to all regulations of Part 2 of the Sporting Code, Section 4, Volume SM.

14.3. HOMOLOGATION REQUIREMENTS

In addition to the standard FAI homologation data, the following special space model record homologation requirements must be met by any record claimant.

- 14.3.1. The competition flight card of the submitted record attempt shall be marked, "Record Attempt." Tracking station angular data must be entered in ink. The name, signature, license number and address of the record claimant must appear, written in ink, on the contest card. The following data, entered in ink, must also appear on the contest flight card: competition sanction number, event in which the record attempt was flown, date of record attempt, location of record attempt, certifying signatures of three witnessing judges, a signed statement certifying the calibration and accuracy of the tracking system used, and a statement signed by the three judges giving the make, type and manufacturer of the engines used in the attempt.
- 14.3.2. In the case of parachute/streamer duration record attempts, the three witnessing judges must submit a signed statement giving size, material and design of the parachute used.

14.4. HOMOLOGATION DATA

The record claimant must submit the following homologation data:

- a). An accurate drawing to scale of the model used in the record attempt, said drawing to include all principal dimensions, gross weight, and burnout weight.
- b) A clear, glossy photograph enlargement of the model used in the record attempt with a ruler, hand, or other object of known size appearing in the photograph indication size of the model.
- c). The record dossier should contain the completely filled out forms as shown in tables II through V as far as applicable to the class concerned.

14.5. JUSTIFICATION

It is the purpose of homologation procedures and requirements to ascertain as well as possible that a given model did indeed attain the flight performance claimed and that the flight was made within the requirements and standards of this Sporting Code. The many factors involved in the flight of a space model require that the above additional data be submitted to confirm a record attempt. In unusual circumstances, the FAI may request additional substantiating data to insure that these purposes have been achieved.

Tables are overleaf

TABLE I
SPACE MODELS “S” CLASSIFICATION OF RECORDS

Space Model Category	Record No.	Class	Total Impulse N sec	Maximum Weight	Number of Payloads
S-1 Altitude	240	S1A	0,00 - 2,50	60	
	141	S1B	2,51 - 5,00	90	
	102	S1C	5,01 - 10,00	120	
	142	S1D	10,01 - 20,00	240	
	143	S1E	20,01 - 40,00	300	
	104	S1F	40,01 - 80,00	500	
S-2 Payload Altitude	105	S2C	5,01 - 10,00	90	1
	106	S2E	20,01 - 40,00	180	2
	107	S2F	40,01 - 80,00	500	4
S-3 Parachute Duration	208	S3A	0,00 - 2,50	100	
	109	S3B	2,51 - 5,00	100	
	110	S3C	5,01 - 10,00	200	
	111	S3D	10,01 - 20,00	500	
S-4 Boost Glider Duration	012	S4A	0,00 - 2,50	30	
	013	S4B	2,51 - 5,00	60	
	014	S4C	5,01 - 10,00	120	
	044	S4D	10,01 - 20,00	240	
	045	S4E	20,01 - 40,00	300	
	016	S4F	40,01 - 80,00	500	
S-5 Scale Altitude	217	S5A	0,00 - 2,50	90	
	018	S5B	2,51 - 5,00	120	
	119	S5C	5,01 - 0,00	150	
	146	S5D	10,01 - 20,00	180	
	147	S5E	20,01 - 40,00	240	
	121	S5F	40,01 - 80,00	500	
S-6 Streamer Duration	222	S6A	0,00 - 2,50	100	
	123	S6B	2,51 - 5,00	100	
	124	S6C	5,01 - 10,00	200	
	125	S6D	10,01 - 20,00	500	
S-8 Rocket Glider Duration	026	S8A	0,00 - 2,50	60	
	027	S8B	2,51 - 5,00	90	
	028	S8C	5,01 - 10,00	120	
	029	S8D	10,01 - 20,00	240	
	030	S8E	20,01 - 40,00	300	
	031	S8F	40,01 - 80,00	500	
S-9 Gyrocopter Duration	232	S9A	0,00 - 2,50	60	
	133	S9B	2,51 - 5,00	90	
	134	S9C	5,01 - 10,00	150	
	135	S9D	10,01 - 20,00	200	
S-10 Flex-wing Duration	236	S10A	0,00 - 2,50	60	
	137	S10B	2,51 - 5,00	90	
	138	S10C	5,01 - 10,00	120	
	139	S10D	10,01 - 20,00	240	

Note: Three figures record numbering was introduced to designate version of rules revision. First figure "0" shows the rules stayed unchanged with respect to the FAI Sporting Code Section 4d - edition 1997. The first figure "1" shows the new rules became effective Jan 1, 2001, and established record was retired. The first figure "2" corresponds to the rules effective Jan 1, 2005 and established record was retired."

TABLE II
APPLICATION FOR RECORD ATTEMPT CONFIRMATION
SPACE MODELS

RECORD CATEGORY (Class) :

PERFORMANCE (Altitude or Duration) :

DATE AND PLACE OF THE RECORD ATTEMPT :

CONTEST :

EVENT :

NAME OF SPACEMODELLER :

SPORTING LICENCE NUMBER :

NATIONALITY :

NATIONAL AERO CLUB :

CHARACTERISTICS OF MODEL :

TYPE OF MODEL :

TOTAL SURFACE AREA (for classes S4, S8 and S10):

LENGTH :

TOTAL WEIGHT WITHOUT FUEL :

TOTAL WEIGHT WITH FUEL :

ENGINE: TYPE :

MANUFACTURER :

DESIGNER :

TOTAL IMPULSE IN Ns :

NUMBER OF ENGINES :

TOTAL IMPULSE (ALL ENGINES) IN Ns :

We confirm, that all conditions necessary for this event, in accordance with Sporting Code of the FAI have been fulfilled.

First Judge: Signature:

Judges:

.....

.....

Signature of Spacemodeller:

Date:

Certification by NAC Official:

Name: Signature

TABLE III
PERSONNEL

SPACEMODELLER:

Name:
Permanent address:
Sporting license No.:

FIRST JUDGE:

Name:
Permanent address:
Sporting license No.:

JUDGES AND TIME-KEEPERS:

Name:
Permanent address:
Sporting license No.:
Name:
Permanent address:
Sporting license No.:
Name:
Permanent address:
Sporting license No.:

CERTIFICATION BY NAC OFFICIAL:

Name Signature

TABLE IV

DURATION RECORD ATTEMPT DATA

DURATION OF RECORD FLIGHT :
 DATE OF ATTEMPT :
 PLACE OF ATTEMPT :
 NAME OF SPACEMODELLER :
 SPORTING LICENSE NO. :
 CATEGORY AND CLASS OF MODEL :
 DIMENSIONS OF PARACHUTE(S)/STREAMER :
 MATERIAL OF PARACHUTE(S)/STREAMER :
 DESIGN OF PARACHUTE(S) :
 CHRONOMETERS (Type used) :
 OPTICAL INSTRUMENTS USED :
 TIME OF START :
 TIME OF LANDING :
 TIME OF RETURN OF MODEL :

Name of Judge-Timekeeper:	Time of Duration of flight:	Signature of Judge:
_____	_____	_____
_____	_____	_____
_____	_____	_____

AVERAGE TIME OF DURATION OF FLIGHT: _____

DATE AND PLACE: _____

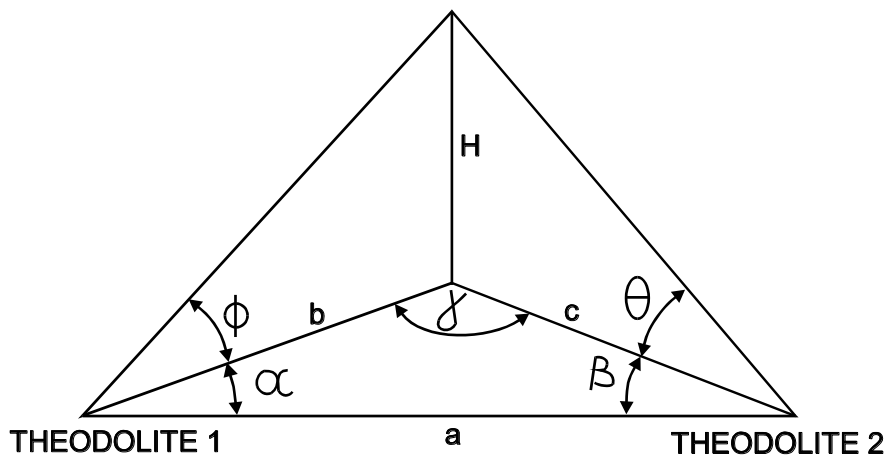
SIGNATURE OF FIRST JUDGE: _____

TABLE V

(SHEET 1)

ALTITUDE RECORD ATTEMPT DATA- TRIANGULATION METHOD

ALTITUDE OF RECORD ATTEMPT :
 DATE OF ATTEMPT :
 NAME OF SPACEMODELLER :
 SPORTING LICENSE NO. :
 CATEGORY AND CLASS OF MODEL :
 TRACKING THEODOLITES USED :
 NUMBER OF THEODOLITES :
 THE LENGTH OF BASELINE :
 METHOD USED TO DETERMINE
 BASELINE MEASUREMENT :
 BALANCE OF HEIGHT DIFFERENCE
 BETWEEN THEODOLITES AND THE
 LAUNCHER (Method used) :
 ANGLES TAKEN WITH THEODOLITES:
 THEODOLITE 1: AZIMUTH (α)
 ELEVATION (ϕ)
 THEODOLITE 2: AZIMUTH (β)
 ELEVATION (θ)



**TABLE V
(SHEET 2)**

ALTITUDE RECORD ATTEMPT DATA – TRIANGULATION METHOD

$\alpha =$ _____ $^{\circ}$ $\sin \alpha =$ _____
 $\beta =$ _____ $^{\circ}$ _____ $\sin \beta =$ _____
 $\gamma =$ _____ $180^{\circ} - (\alpha + \beta) =$ _____ $\sin \gamma =$ _____

$a =$ length of base in metres _____ m

$b = \sin \beta \frac{a}{\sin \gamma} =$ _____ m

$c = \sin \alpha \frac{a}{\sin \gamma} =$ _____ m

$H1 = b. \tan \phi =$ _____ m

And $H2 = c. \tan \theta =$ _____ m

Average altitude $H = \frac{(H2 + H1)}{2} =$ _____ m

THE RESULT _____ m and _____ m IS IN COMPLIANCE WITH THE ADMISSIBLE TOLERANCE OF 10% ACCORDING TO SPORTING CODE SECTION 4d ART No. 4.9.4.

PLACE AND DATE:

SIGNATURE OF OBSERVERS : 1. _____

2. _____

SIGNATURE OF FIRST JUDGE: _____

TABLE VI**FAI/CIAM****CHECK LIST DOSSIER – SPACE MODELS**

WHEN PREPARING A WORLD RECORD DOSSIER PLEASE CHECK
AGAINST THIS LIST THAT ALL REQUIREMENTS HAVE BEEN MET

In Check Mark Column: If OK Mark ✓, if not applicable mark X.

ITEM No.	DESCRIPTION	CHECK MARK
0	GENERAL FAI Office in Lausanne notified by email or fax within seven (7) days after the record was set.	
1	Form Table II completely filled out and properly signed (names also in block writing). DO NOT FORGET CERTIFICATION BY NAC OFFICIAL	
2	Drawing of model, including principal dimensions and weight certified by NAC Official. Reference Sporting Code Section 4c (2.10.1.2.) and Section 4d (14.4.1.).	
3	Photograph of model, certified by NAC Official Reference Section 4c (2.10.1.3) - Section 4d (14.4.2.).	
4	List of officials and observers, signed by Directing Official/First Judge Reference Section 4c (2.11) - Section 4d (Table III).	
5	Summary of all supporting data supplied. Reference Section 4c 2.10.1.4.)	
6	All supporting data signed by Directing official/First Judge.	
7	Description of record attempt. Reference Section 4c (2.11).	
8	Competition Flight Card, properly marked and signed, with data entered in ink, as per Section 4d para. 14.3.1.	
9	Competition Flight Card, reference item 8 above, showing both stopwatch readings entered in ink and signed by both official timekeepers.	
10	Form Table IV completely filled out and properly signed.	
11	Final record figure rounded down to lower whole second, discarding fractions of a second. Reference Section 4c (2.3.4.).	
12	Certificate on accuracy of stopwatches or special time device.	
13	ALTITUDE RECORDS Form Table V (2 sheets) completely filled out and properly signed	
14	Competition Flight Card, reference item 8 above, showing theodolite readings in ink and signed by both official theodolite operators Reference Section 4d (14.3.1).	
15	Statement on calibration and accuracy of the tracking system used. Reference Section 4d (14.3.1.).	

NOTE: ALL DOCUMENTS MUST BE ORIGINAL DOCUMENTS. COPIES WILL NOT BE ACCEPTED.

ANNEX 1

SCALE SPACE MODELS JUDGE'S GUIDE

EVENT:..... () Scale (Class S7)
 () Scale Altitude (Class S5)

Name:

FAI Licence Number:

Competitor Number:

National Team:

Prototype Name:

Prototype Serial Number:

DISQUALIFICATIONS

(Applicable FAI Rule Number Shown in Parenthesis)

- Prototype is not a guided missile, rocket, or space vehicle (9.1)
- Entry has no lower stage (multi-stage prototypes only) (9.2)
- No length and/or diameter data supplied for prototype (9.4)
- No photograph of prototype supplied (9.4)
- Entry utilises plastic kit parts not identified as such (9.7)
- Entry not submitted in flight configuration (minus motors and recovery device packing) (9.8)
- Entry does not carry competitor's FAI number (4.4.2)

FAI CATEGORY	SUB-CATEGORY	JUDGING CONSIDERATIONS	POINTS
Technical Data	Prototype Drawings	To what degree is external prototype detail substantiated by drawings? How authentic are these drawings compared to prototype manufacturer's drawing? - authentic, authorised drawings - authentic cross-section drawing(s) - data which define colour and markings on it. - workshop drawing of scale model - scale 1:1 - file containing all necessary data including those from paragraph 4.4.3	Note: no points for technical data. Check only what is submitted of the required data and below, give points only to those items documented by these technical data.
	Prototype Photographs	To what degree are external prototype detail, colour, and marking substantiated by photographs? - at least one colour photograph of the whole prototype with clearly visible details. - at least three photographs of details and assemblies	

FAI CATEGORY	SUB-CATEGORY	JUDGING CONSIDERATIONS	POINTS
Degree of Difficulty	Configuration	To what degree does the entry depart from the configuration of a “finned cone-topped cylinder.	(0-30)_____
	External Components	Consider the number and complexity of the entry’s external components including fins, transitions, interstage adapters, shrouds, strap-on booster, launch lugs, antennae, etc. Also consider to what extent the aforementioned components were prefabricated by none other than the entrant.	(0-20)_____
	Detailing	Consider the number of separate details including nuts, bolts, screws, rivets, fasteners, welds, hatches, panels, corrugations, etc. Also consider to what extent the aforementioned details were prefabricated by anyone other than the entrant.	(0-20)_____
	Paint Pattern	consider the number of colours and complexity of the entry point pattern. Also consider the number and complexity of the entry’s markings and to what extent these markings were prefabricated by anyone other than the entrant.	(0-20)_____
	“Flyability”	Consider the difficulty in adapting the entry to make a qualified flight including absence of fins, small fin area, extremes of CP and/or CG, etc.	(0-30)_____
	“Originality”	Bonus points: 40 points for a prototype of one kind in the competition; 20 points if there are two of the same prototype; zero points if there are three models of the same prototype. Category Total (150 Max)	(0-40)_____

FAI CATEGORY	SUB-CATEGORY	JUDGING CONSIDERATIONS	POINTS	
Scale Adherence	Colour	Comparing the entry to colour photographs, paint samples, or other colour substantiation, to what degree does the entry's colour(s) resemble that prototype's colour?	(0-25) _____	
	Markings (lettering & insignia)	Comparing the entry to photographs, marking diagrams, or other marking substantiation, to what degree to the entry's markings resemble the prototype's markings?	(0-25) _____	
	Dimensions	Overall model length		(0-25) _____
		Nose cone length		(0-25) _____
		Greatest measurable body diameter		(0-25) _____
		Length of the first stage		(0-25) _____
		Fin span (individual fin or tip-to tip)		(0-25) _____
	Selected dimension greater than 10 mm (second stage length, diameter, etc.)		(0-25) _____	
	Award points shall be based on a % deviation from the prototype's scaled dimensions. Each 1% error reduces the value by 2 points. Deviation > 10% shall be awarded a value of 0. * If prototype is finless, select one other dimension greater than 10 mm and check here ()			
		Category Total (200 Max)		

FAI CATEGORY	SUB-CATEGORY	JUDGING CONSIDERATIONS	POINTS
Workmanship	Construction	Consider the absence of visible glue joints, that edges and demarcations should be precise, that planar surfaces should be flat, etc.	
		Nose cone & transitions	(0-40) _____
		Body	(0-40) _____
		Fins or Stabilising surfaces (including clear plastic)	(0-30) _____
		Details	(0-40) _____
	Finish	Consider that surface textures should duplicate base material of prototype; that paint and other surface coatings should be uniform (unless this would deviate from prototype's finish) thin, dust-free and of the proper texture; that colour demarcations and markings should be crisp* and precise.	
		Nose cone & Transitions	(0-40) _____
Body		(0-40) _____	
	fins	(0-20) _____	
	*		
		Category Total (250 Max)	

FAI CATEGORY	SUB-CATEGORY	JUDGING CONSIDERATIONS	POINTS
Flight Characteristics	Launch	Was the launch successful? If not, subtract 10 points for each misfire or hang-fire for a maximum of minus 30 points (0 or minus)	_____
	Flight	Realism of launch compared to prototype. Was the take-off speed abrupt or was it a smooth lift off from the launch pad?	(0-30)_____
	Flight	Realism of flight. Was it a vertical flight without weather-cocking of launcher tip-off? No rotation unless prototype rotated. Stable straight flight without oscillation?	(0-30)_____
	Special Effects	Did the model exhibit any special effects such as Launching a space probe, separating boosters, radio control devices, ejecting satellites, deploying shield, scale launcher, gliding recovery etc. Special effects can only emulate the actions of the prototype. Maximum of 15 points for each effect.	(0-60)_____
	Staging	Add 30 points for each successful stage separation. No points for a single stage model.	(0-60)_____
	Clusters	Add 5 points for each engine that ignites up to a maximum. No points for single engine models.	(0-30)_____
	Staging and Cluster Misfires	Subtract 15 points for each engine that fails to ignite.	(0 or minus) _____
	RC Gliding Descent	Stabile gliding, realism of gliding descent of the prototype and safe landing without damage.	(0-50)_____
	Recovery	Single stage model (or booster stage) Recovery device deployment (1 parachute – 10 points)	(0-20) _____
		Multi stage model (upper stage(s)) Recovery device deployment (1 parachute – 10 points, 1 streamer – 5 points)	(0-20)_____
		Category Total (300 Max)	_____

ANNEX 2

SPACE MODELLING JUDGES AND ORGANISERS' GUIDE

1. PURPOSE and FUNCTION of JUDGES GUIDE:

The purpose of this guide is to provide a uniform understanding, interpretation and application of the FAI Sporting Code for Spacemodelling. This guide describes how Spacemodelling Judges and other officials will officiate at the World or Continental Space Modelling Championships. Judges must acquaint themselves with the FAI Sporting Code, Section 4 Aeromodelling volume ABR (Sections A & B) and volume SM - Space Models.

2. JUDGES TASKS:

Timekeepers/Field Monitors/Judges Duties:

- a. Impound, safeguard, and distribute certified contest engines.
- b. Impound, safeguard, and distribute FAI approved payloads.
- c. Impound, safeguard and distribute electronic altimeters.
- d. Maintain stocks of flight cards as needed for the competitors.
- e. Check models and recovery devices for proper identification.
- f. Measure the size of recovery devices, if needed.
- g. Know the maximum time limit for each duration type round.
- h. Determine flights adherence to rules and safety. (safety rulings will also be made by the RSO or his deputies).
- i. Declare disqualifications and note rationale on flight cards.
- j. Time and record duration data onto flight cards.
- k. Ensure completed flight cards are sent for data reduction.
- l. Check-in and out stop watches, binoculars, and clipboards as needed to perform their duties.

Special Judge Duties:

- a. Announces the start and stop of each round/event.
- b. Responsible for the check-in and out of judges' stop watches, binoculars, electronic altimeters and other tools.
- c. Radio control events require that all transmitters (including 2.4 GHz) be impounded and kept under control of a steward and be issued to the competitor at flight time then returned. The steward or the judge will also monitor radio frequencies to detect interference and communicate this information to the pilot.
- d. Altitude competitions with electronic altimeters require that all electronic altimeters be impounded and kept under the control of a steward and be issued to the competitor at the flight time and then returned.

Safety and Rule Compliance Officials:

- a. Will give models and recovery devices a pre-flight safety and rule compliance inspection and mark each part.
- b. Attest to the appropriateness of submitted FAI payloads.
- c. Supervise calibration of electronic altimeters.

Engine Test Officials:

- a. Will attest to the certification of team submitted engines.
- b. Engines will not exceed Newton Seconds value of class.
- c. Test two engines of each batch.
- d. Any failure of tested engines requires rejection of batch.
- e. Batch is defined as the engines required for one engine class in an event regardless of delay length. Maximum three batches are allowed per an engine class per an event.

Electronic Altimeter Test Officials:

- a. Will attest to the certification of team submitted electronic altimeters.
- b. Will give electronic altimeters to competitors and after flights readout, register and safely store results during the competition and when competition is finished to present them on an electronic memory to the organiser of the event..

Scale Judges:

- a. Will award scale static and flight points in accordance with scale judging guide.
- b. Will be responsible for giving copies of the scale judging forms used to record a competitor's points in Scale (S7) and Scale Altitude (S5) to each competitor in these events, before the end of the contest.

3. GENERAL JUDGING CRITERIA:

Experience shows that often two different sets of eyes, knowing the same rules, and seeing the same occurrence will result in two different opinions on what happened. The following section attempts to anticipate areas where different judgements can occur and provide the definition and interpretations necessary so we can reduce potential ambiguities on the field.

- a. **Who can disqualify a flight (DQ).** The RSO and his deputies are the only persons who can disqualify a flight in the FAI First Category events (World Air Games, World and Continental Championships and International sporting events approved by CIAM). Time-keepers may be called upon to make decisions on flight adherence to rules and safety in the FAI Second Category events (other international sporting events organised by or under the authorisation of NACs. In the case of Scale competition (Class S7), Scale Judges who judge flights for flying characteristics shall continue to judge even if the RSO declares a DQ, in case any protest is upheld by the FAI Jury and the points given for flight characteristics shall then count.
- b. **Catastrophic Failure.** A catastrophic failure by nature of the name has to be obvious. You as a judge must know of the failure when it occurs. To look later at what appears to be a normal spent casing after a flight while a competitor argues that the delay was too long, short, or missing offers no proof to the claim of a catastrophic failure.
- c. **Instability.** Any non-glider model that loops while coasting or thrusting is unstable. Unstable models are unsafe and cannot be qualified. Likewise, a power pod that detaches from an otherwise true-flying model and spins about, disqualifies the flight.
- d. **Unsafe Recovery.** Crashes and other unsafe recoveries cannot be qualified. What constitutes an unsafe recovery? The rules state it is one that creates a hazard to property or people. For consistency let us ask ourselves if we would like to be under the rocket we are judging when it lands. If the answer is "no" then a disqualification is called for especially during payload flights where no minimum size parachute is required.

In the case of scale models unsafe recovery is when a recovery device (parachute or streamer) of a substantial part of the model ie nose cone, any of the stages or boosters does not deploy and can be hazardous for persons or property on the ground. If a streamer or a parachute of a smaller and insignificant part of the model eg light Styrofoam or similar forms that represent satellites or other special effects, does not deploy properly, then this is not a reason for disqualification but for a reduction of points for Flight Characteristics, Recovery.

4. SPECIFIC EVENTS:**a. Rocket Glider and Boost Glider.**

These models must ascend in a near vertical/non-shallow manner. Where is the cut off on a shallow ascent? Interpret this as a qualified flight: a glider that ascends under power at an angle or more than 60 degrees from the horizontal.

Glider also may not loop while thrusting. After burnout, during the engine coast and ejection, looping is permitted - as long as the model does not present a safety hazard to people or property.

Rocket Gliders cannot separate into two or more pieces; boost gliders may eject an engine pod. The pod (airframe) must descend by streamer or parachute.

cont/...

Gliders have to have a stable aerodynamic glide recovery. Often opinions will differ on “what is a glide.” Here is how to interpret this. The recovery has to be effected by a stable, predictable, aerodynamic glide with air passing over the wings. The model must descend with a nearly horizontal angle of attack. When is the descent not a glide? Imagine a pilot inside a full sized glider exhibiting the same flight characteristics as the model you are judging. Would you be willing to trade places with the pilot? A “no” earns the flight a disqualification. Rationale: No glide is unsafe recovery.

In classes S4, S8 and S10, a flight is declared official if the model maintains a stable aerodynamic glide for at least 60 seconds, or it lands by stable flight.

b. Streamer Duration.

Streamer lengths have to be a 10:1 ratio to widths minimum.

Rules state that a streamer has to be a single piece of flexible material. This shall be interpreted as one uncut, no joints, homogeneous piece, not two or more pieces, joined together to form one length.

Rules state that a streamer must unfurl. This shall be interpreted to completely unfurl so that the 10:1 length/width ratio is exhibited. A small ball of wadded streamer at the end of an almost completely unfurled streamer, then must disqualify the flight.

FAI rules do not prohibit streamers that form loops or bows once fully deployed. If the wind loops a streamer fully deployed the flight must be considered official as long as no ground hazard results.

c. Payload Flights. See General, paragraph 3d. Unsafe Recovery.

d. Scale Events. : The scale judges will judge scale models for flight characteristics in accordance with Annex 9 particularly taking care of the following:

d.1. Flight Characteristics-Staging: Stages must separate step by step. If the 3rd stage separate simultaneously with the 2nd stage the flight will be considered two stage only. With Saturn 1B and Soyuz if the competitor performs a powered flight of command module, this shall be evaluated as "modeller's third stage" , according to paragraph 2.3.1.

d.2. Flight Characteristics - Special Effects: As Special Effects (according to the judging rules) may only emulate the action of the prototype. Three staged rockets, like Ariane, shall not deploy nose cone cover shield and jettison a satellite during operation of the 1st or 2nd stage. On the contrary, with Saturn or Soyuz function of rescue system during the 1st stage operation is planned and possible. In case of doubt, competitor is obliged to prove reality of declared special effect by relevant technical data. How many points award for several special effects? Compare the degree of difficulty of four booster separation to smoke before lift off!

d.3. Cluster : “Cluster” should be understood to be a set of more than one engine placed in more than one nozzle of the scale model and which shall ignite simultaneously. They are exact replica of a multi nozzle prototype one nozzle of the prototype – one spacemodelling engine. So if four engines are ignited simultaneously judges shall give points for cluster 4 time 5 point – 20 points. For prototypes with only one nozzle in which some space scale modellers use to put cluster of smaller space models engines points for cluster shall not be awarded (so 4 times 10 Ns engines tied together in one nozzle is zero points for cluster). However, if one of these engines does not ignite – it is “Misfire” that should be punished with minus 15 points. This shall be easy to understand if you compare a degree of difficulty of a set of engines placed in model nozzles like at a prototype - distant from the longitudinal axis of a model in comparison with a several engines tied together in centre of model’s body.

d.4. Flight Characteristics-Recovery: For single stage, one parachute up to 10 points will be awarded. If a single stage rocket separates up to 20 points will be awarded. With multistage models deployment of a parachute will be awarded up to 10 points and a deployment of streamer 5 points. Maximum recovery points in any case may not exceed 40. To prove if the scale models to be launched are the same models which were submitted for static judging, judges will designate each model with an appropriate marking during the static judging.

e. Parachute Duration.

Parachutes must deploy. No minimum sizes are stated. Where then is the cut off of a deployed parachute and one not deployed? FAI rules state that at least three shroud lines make up the parachute. Broadly speaking: “to deploy” means “to widen”. The working definition on a “deployed” parachute then will be one which exhibits at least three shroud lines and widens out when ejected. Thus, if a model descends under a crumpled wad or slender stick of parachute

material then this is not deployment. However, if the model descends with the parachute partially open or spread out as a fan, the flight is qualified. This un-blossomed parachute will be timed and considered an official flight. The descent must still be safe.

The decision of the RSO or his deputies on matters of safety takes priority.

5. ORGANISERS TASKS:

Before the beginning of any Spacemodelling competition, the organiser is obliged to provide conditions for competition in accordance with the provisions of the FAI Sporting Code, Section 4 Aeromodelling, Volume ABR, paragraph B.12.

- a. **Scale Events** - The organiser of an international contest shall appoint three scale judges from the nomination list of Space Models FAI Judges. In case of World or Continental Championships, there will be appointed five FAI judges and one reserve judge of different nationalities, including the Chief Scale Judge. Their names will be submitted to the CIAM or CIAM Bureau for approval. The Chief Scale Judge may not be from the organising NAC. He shall organise work of the judging panel and shall represent it. An extra judge (who may be the reserve judge) shall be appointed as the chief of the dimension measuring team.

In World and Continental Championships a panel of five judges shall award their points independently. The highest and the lowest score shall be neglected and the average of the remaining three scores shall give the final score. In World Cups and/or in Open International-non World Cup events a panel of three judges not necessarily from different countries shall give points.

The organiser shall also provide an adequate area for relevant number of entries with bright overhead lights and with tables for turn in, static judging and dimension measuring. The static judging area will be equipped with dimension measuring devices and a PC with a qualified operator. Access to the static judging area during static judging will be restricted to all persons except for static judges, dimension measuring team, PC operator, contest director and FAI Jury.

b. Altitude Events

b. 1. Tracking by Theodolites: Organiser of an international altitude event must provide altitude measuring devices in compliance with the rule 4.9.1.2. and qualified personnel for altitude measuring. He also must provide radio communications between tracking stations, RSO and the computer centre in the field. Altitude measuring team shall do test tracking on duration and/or scale models on the day preceding the competition day(s) for altitude events to check tracking and data reduction systems. The head of the altitude measuring team shall present test altitude measuring results to the Jury to prove altitude measuring team readiness and necessary accuracy of measurements and get Jury approval, before the official flights begin in an altitude event.

b. 2. Use of Electronic Altimeters: The organizer must provide a calibration tool for simultaneous calibration of all electronic altimeters in use. This tool shall have reference altitudes of 300 m, 600 m and 1200 m. Devices that meet the technical specifications given in paragraph 4.9.2.1. of these rules may be used in contests. The organizer shall preferably for World and Continental Championships provide electronic altimeters of the same type and from the same manufacturers that can be distributed or sold to the participants after the contest. The organizer, also, shall provide a pound for all altitude devices and a log in which shall be recorded when and to whom the devices are issued and when they are returned. This shall be controlled by two stewards. There shall be two launch site monitors at each launch site and four field monitors in the recovery area that may serve as time-keepers in duration classes. Results shall be read, recorded and then posted on the score board just after model recovery.

- c. **Range Safety Officer (RSO)** - Organiser of an international contest will appoint a person to act as Range Safety Officer (RSO) from the FAI nomination list of judges – specialised in spacemodelling. He may appoint other qualified persons to act as his deputies in accordance to the provisions of the rule 4.3. In case of World or Continental Championships, organiser of the contest shall submit name of RSO to CIAM or CIAM Bureau for approval. RSO may not be from the organising NAC. When there are junior and senior classifications at the same place and at the same time organiser shall appoint two RSO, one for senior and the other for junior classification. They shall be not of the same nationality but shall have one language in common.

ANNEX 3**SPACE MODELS WORLD CUP****1. Classes**

The following separate classes are recognised for World Cup Competition: S4A, S6A, S7, S8E/P and S9A.

2. Competitors

All competitors in the specified open international contests are eligible for the World Cup.

3. Contests

Contests included in the World Cup must appear on the FAI Sporting Calendar and be run according to the FAI Sporting Code. The contests to be counted for a World Cup in one year are to be nominated at the CIAM Bureau Meeting at the end of the preceding year and are to be indicated on the FAI Contest Calendar.

4. Points Allocation

Points are to be allocated to competitors at each contest according to their placing and results as given in the following formula below:

$$B = K \times \left(\frac{X}{Y} + \frac{\log(A) - \log(N)}{10} \right) \times 100$$

where: B = points awarded to the competitor

X = competitors score

Y = winners score

A = number of competitors

N = placing of competitor.

Points are awarded only to competitors completing at least one flight in the contest.

In the event of a tie for any placing, all competitors with that placing receive the number of points appropriate to that placing, rounding up the score to the nearest whole number of points

5. Classification

The World Cup results are determined by considering the total number of points obtained by each competitor in the World Cup events. Each competitor may count the result of all competitions, except that only one competition may be counted from each country in Europe (taking the better score for any European country in which he has scored in two competitions). To determine the total score, up to three events may be counted, selecting each competitor's best results during the year.

No more than two World Cup competitions per country shall be organised unless the particular country extends over three or more time zones, when two competitions per time zone may be organised. The better score per time zone counts.

In the event of a tie the winner will be determined according to the following scheme. The number of events counted will be increased from three, one at a time, until the winner is obtained. If this does not separate the tied competitors then the winner will be determined by considering the points obtained in the best three events multiplied by the number of competitors flying in each event. The winner is the one with the greatest total thus calculated.

6. Awards

The winners earn the title of Winner of the World Cup. Certificates, medals or trophies may be awarded by the Subcommittee as available.

7. Organisation

The Subcommittee shall be responsible for organising the World Cup and may nominate a responsible person or a special subcommittee to administer the event.

8. **Communications**

The Chairman of the Space Model Subcommittee should receive the results of each contest in the World Cup and then calculate and publish the current World Cup positions. These should be distributed to the news agencies and should also be available to any interested bodies or individuals. Latest results will also be sent to the organiser of each competition in the World Cup for display at the competition. Final results of the World Cup are sent to the FAI, National Airports Controls and modelling press. Each World Cup Contest Organiser is obliged to send results of his contest to the Chairman of the Space Models Subcommittee and to another person (if nominated) responsible to administer, the event within three days after the contest has ended. The current World Cup position will be calculated and distributed within the next seven days.

9. **Jury**

A jury of three responsible people shall be nominated by the CIAM Space Modelling Subcommittee to rule on any protest concerning the World Cup during the year. Any protest must be submitted in writing to the Space Model Subcommittee Chairman and must be accompanied by a fee equivalent to 50 €. In the event of the Jury upholding the protest, the fee will be returned.

ANNEX 4**SPACE MODELS INTERNATIONAL RANKING****1. Definition/Description**

This is a continuous classification based on the results of all open and limited international events, as well as continental and world championships and world cup contests. The intent of the classification is to encourage competitors to enjoy versatility of space models by flying more than one, traditional, class and to be awarded for efforts made in whole space models activity during the year.

2. Classes

All classes listed in rule 4.3. as World Championships Events for Space Models are recognised for Space Models International Ranking.

3. Competitors

All competitors in specified international contests are eligible for Space Models International Ranking (SMIR).

4. Contests

Contests appearing on the FAI Sporting Calendar, run according to the FAI Sporting Code and nominated at the CIAM Bureau Meeting at the end of the preceding year will be recognised for SMIR.

5. Points Allocation

Points are allocated as follows:

$$B = K \times \left(\frac{X}{Y} + \frac{\log(A) - \log(N)}{10} \right) \times 100$$

B = points awarded to the competitor

X = competitors score

Y = winners score

A = number of competitors

N = placing of competitor.

K = ranking factor of a contest where for:

- World Championships K = 2
- Continental Championships K = 1.5
- World Cups K = 1
- Open Internationals not World Cup K = 0.75

6. Classification

SMIR results are determined by considering the total number of points (but not fly-off points) obtained by each competitor in events registered in FAI Sporting Calendar according the following ranking algorithm:

- a) Points are awarded only to competitors completing at least one flight in the contest.
- b) Only one competition of the same rank for the same class may be counted from each country in Europe or per time zone for countries extending over three or more time zones (taking the better score for any European country or time zone in which he had scored in two competitions).
- c) To determine the total score up to seven events of at least two different classes will be counted, selecting each competitor's best results during the year.
- d) In the event of tie the winner will be obtained by increasing number of events counted, one at the time, until the winner is obtained.

cont/...

7. Awards

The winner earns the title World Space Modeller of the Year. Certificates, medals or trophies may be awarded by the Subcommittee if available

8. Organisation

As per World Cup contests.

9. Communication

As per World Cup contests.

10. Classification Supervision

As per World Cup contest.

ANNEX 5

GENERAL ORGANISATION OF A WORLD CHAMPIONSHIP

- 1. Time to Elapse:** 12 months. **Planning:** Models Commission of National Airports Control or equivalent investigates sites, accommodation and business management of potential championships including sponsorship. Produce estimates based upon number of competitors, administrators, supporting officials, press, etc.

Action: Contact with airfield authorities and possible sponsors.
- 2. Time to Elapse:** 11 months. **Planning:** Specialist committee created for organisation (Chairman, FAI Delegate, Treasurer, Event specialists and Contest Director). Financial estimates produced. Decision made to proceed with an offer to host event.

Action: FAI Delegate briefed to present proposition to CIAM.
- 3. Time to Elapse:** 9 months. **Planning:** Proposition made to CIAM Plenary Meeting, naming location, accommodation facilities, esteemed fees, period of meeting, associated events.

Action: CIAM accepts offer, approves associated events and fees on estimate.
- 4. Time to elapse:** 8 months. **Planning:** Decision made on contest site plan. Liaison Committee formed with site officials e.g. FAI Delegate, Chairman, Vice-Chairman, Treasurer and Contest Director with Airfield or Contest site administration officials. Site measured and plan of proposed area prepared including flight areas and buildings.

Action: Meeting of preliminary planning personnel on location; minutes and data circulated to all organising personnel.
- 5. Time to Elapse:** 7 months. **Planning:** Full Budget prepared. Based on quotation for accommodation, feeding, travel costs of Judges, equipment, purchase, printing, hire of materials and other expenses. First publicity release and advance information memorandum prepared. Cost of entry fee finalised. Programme visualised and advertisement support solicited.

Action: Issue of invitation to all member NACs of FAI with memorandum containing rules for event(s).
- 6. Time to Elapse:** 6 months. **Planning:** Jury, Judges and Timekeepers nominated. Fully detailed site plan prepared by Contest Director. Firm duties allocated for:

 - a) Liaison with Site officials
 - b) Field Organisation
 - c) Printing and Publicity
 - d) Finance
 - e) Preparation of special equipment
 - f) Accommodation.

Action: Report to CIAM Bureau meeting by FAI delegate. Judges and reserves confirmed. Method of judging approved by CIAM Bureau.
- 7. Time to Elapse:** 5 months. **Planning:** Meeting with site officials. Confirming accommodation available. Local town accommodation reserved for visitors, married personnel, etc. Flying area surface inspected, contest layout planned for ceremonies, pit areas, processing bays. Event emblem and programme layout defined. Second publicity releases issued. All jury and Judges announced. Quotes accepted for public service toilets, field refreshments, etc. Banquet and prize giving planned.

Action: All officials active in procurement of material, particularly publicity officer, FAI delegate and Programme Producers.

cont/...

8. **Time to elapse:** 4 months. **Planning:** Personnel for each event nominated or chosen from volunteers in NAC. Requirements as follows: Processing team; Director for each event circle; timekeepers; scorers; lap counters; messengers; monitors.
- Action:** All personnel advised of duties and obligations. Work delegated to spread responsibility.
9. **Time to Elapse:** 3 months. **Planning:** First entries acknowledged. By information memorandum, offering travel advice, cost and request for notice of arrival. Programme and contest recording printing ordered. Souvenir plaques ordered. Tents ordered. Early arrivals anticipated. Auxiliary events planned - exhibition, etc. Judges' travel tickets issued. Local practice area selected. Third Press release issued concerning entries .
- Action:** By FAI Delegate and Publicity Officer.
10. **Time to Elapse:** 2 months. **Planning:** Entries officially complete. Numbers finalised for on-site and off-base accommodation. Supporters accepted where possible. Programme copy to printer. Delivery dates finalised for all equipment. Numbered waistcoats, flags, awards prepared. Final directive issued to all personnel stating responsibilities and financial obligations. All primary officials to be fully advised of each other's responsibilities. Daily programme prepared and issued to all competing NACs.
- Action:** Officers for accommodation, publicity. Contest director active in securing all arrangements.
11. **Time to Elapse:** 1 month. **Planning:** Field equipment tested. Lap or score indicators checked. Delivery of barriers or wire mesh. Tables and chairs secured, work benches, spectator stands. Local transport secured. Accommodation fully planned. Programme passed for printing. Contest record cards delivered and prepared. Score boards stencilled. Full schedules of names for competitors, officials, supporters, VIPs and observers prepared with lapel badges for each. (Colour coded, White - Competitors, Yellow - Judges,, Jury, Officials; Brown - General Staff; Green - Important persons and Chief Officials). Souvenirs allocated (brief cases) after making up. Fuels ordered including extra components for visiting entries unable to travel with fuels. Litter sacks ordered. Traffic control planned with highway authorities. Exhibition planned.
- Action:** All officials active. Full exchange of information between all concerned.
12. **Time to Elapse:** 3 weeks. **Planning:** Final Liaison with Site Officials, catering and local authorities. Programmes delivered. All personnel involved in duties other than field events briefed by marshals and event directors as necessary. Fourth press release issued with photographs. Banquet and prizegiving to be finalised.
- Action:** Contest Director, Accommodation and Publicity Officer.
13. **Time to Elapse:** 2 weeks. **Planning:** Flight areas marked and finally prepared. Directions issued to Main Line Railway stations to guide visitors. Treasurer accounts for advance payment of fees. Transport confirmed from nearest rail station. Bedding set aside. Banner, flags and poles prepared. Numbered waistcoats, souvenir plaques, posters delivered and distribution planned.
- Action:** Contest Director, Accommodation, Treasurer, Publicity Officer.
14. **Time to Elapse:** 1 week. **Planning:** Advance party on location. To receive and erect tents, tables, barriers and airfield equipment. All scoring systems, loud speakers, light observation platforms positioned. All equipment tested. Ropes, stakes and litter sack positions planned. Special contest requirements anticipated. Early arrivals diverted to local areas. Fifth press release for local papers.
- Action:** By Contest Director and staff. Publicity Officer.
15. **Time to Elapse:** 2 days. **Planning:** All equipment on location including trophies and printed matter. Ropes and stakes established, public areas controlled. Toilets erected, exhibition staged. Sixth and final press releases issued. Advance radio, TV and photographic reception for publicity arranged. Processing team fully briefed and reception finally planned.
- Action:** All officers active on location.

cont/...

- 16. Time to Elapse:** 1 day. **Planning:** Rehearsals. Models processed, specification cards and FAI licences collected. Briefing of all officials, dummy event to establish standards, for all judges who are pre-briefed, trained through practice flights, then debriefed with analysis of scores. Timekeepers checked for proficiency. All circuits finally prepared. Draw cards and lists prepared for order of flying. Issue of memorandum detailing all decisions of contest management meeting.

Action: All officials, judges, jury team manager.

THE INTERNATIONAL CONTEST THEN TAKES PLACE IN ACCORDANCE WITH THE SPORTING CODE.

- 17. Time Elapsed:** 2 days. **Planning:** Site Clearance. Rearguard party dispatches all loaned equipment, clears accommodation area, secures all found property, lists liabilities, breakages, etc.

Action: Rearguard and contest director.

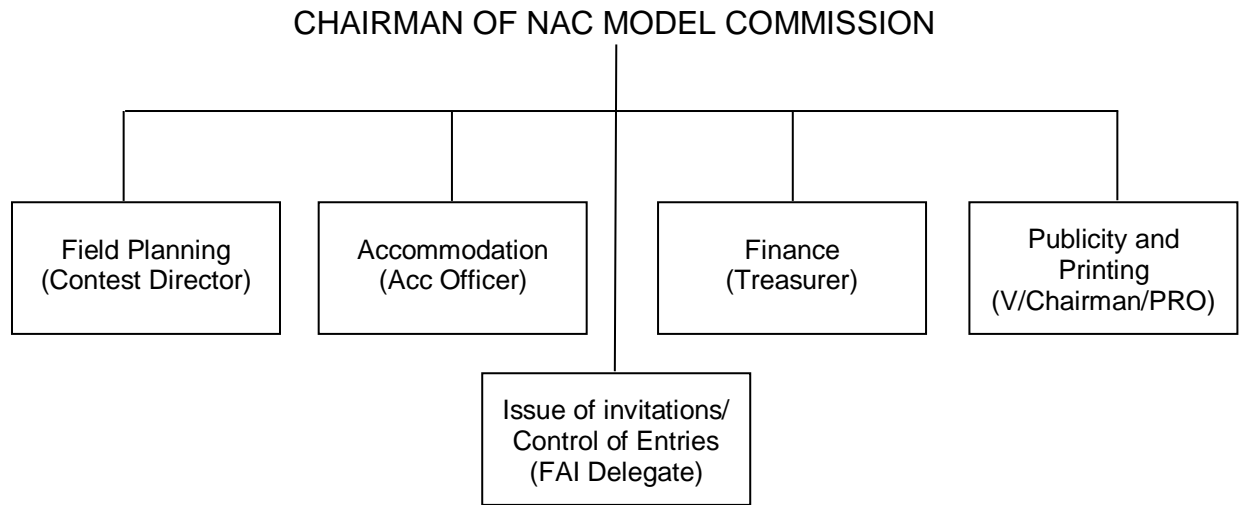
NOTE for WC: RANKING - International Team Classification: Complete three competitor teams are ranked ahead of two competitor teams, which are in turn ranked ahead of single competitor teams.

INFORMATION TO CIAM BUREAU

- 1) The actual situation, date for entries etc.
- 2) Undertaken preparations
- 3) Contest organisation:
 - FAI Jury
 - Contest management
 - Main officials and their duties
 - Arrival, how to find the place
 - Lodgings
 - Camping facilities
 - Hotels
 - Parking
 - Meals
 - Canteen, if any
 - Depots
 - Tracks
 - Conveniences
 - Practice flights
 - Processing
 - Information
 - Public Relations
 - Emergency, first aid
 - Insurance
 - Spectators
 - Programme
- 4) Distribution of maps of the contest area.

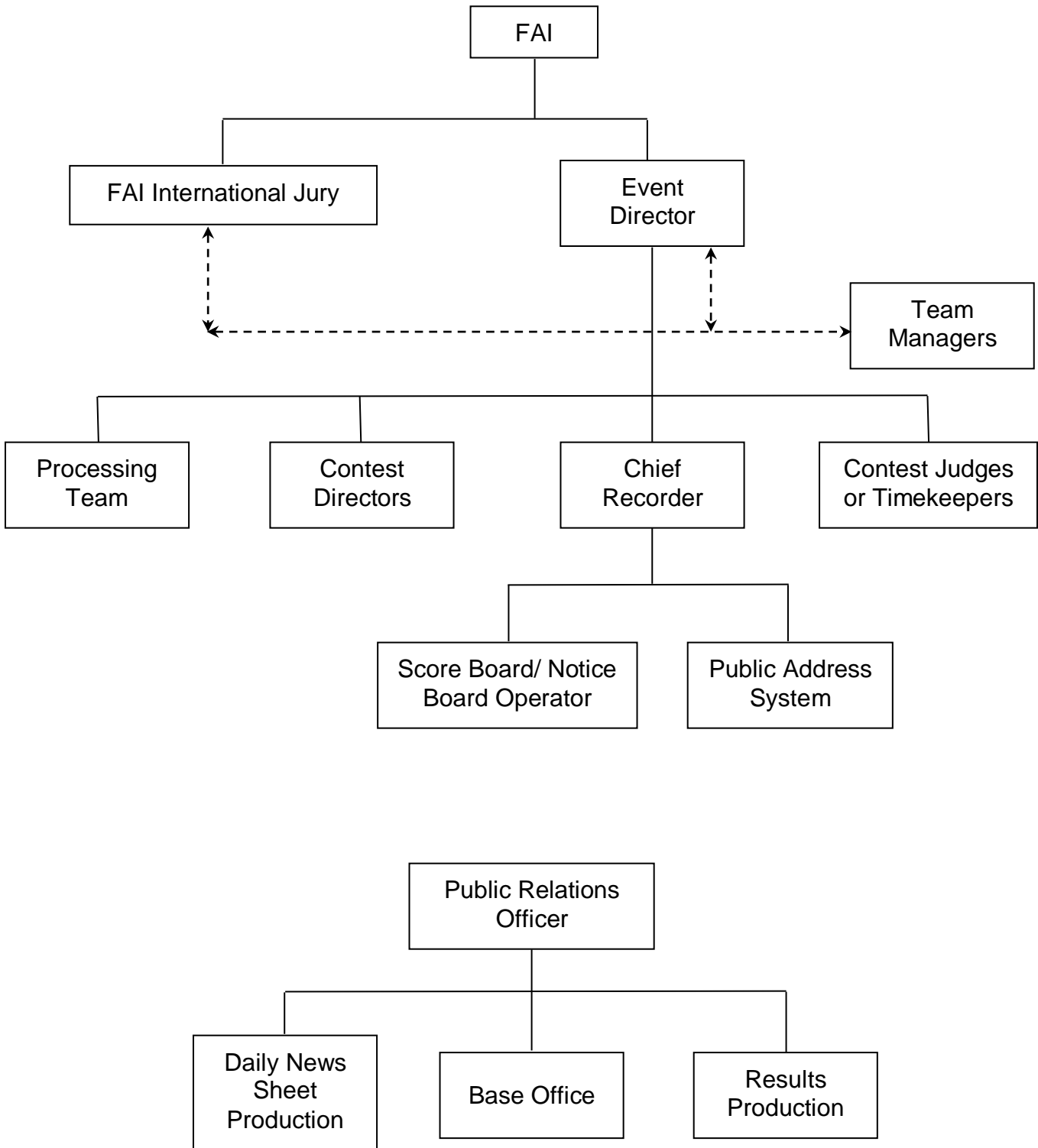
An Administration & Organisation chart appears overleaf.

ADMINISTRATION & ORGANISATION



cont/...

EVENT DIRECTION



It is acknowledged that this memorandum can only be regarded as a general guide and is subject to variation according to the type of contest, venue and local conditions.

PAGE DELIBERATELY LEFT BLANK

PROVISIONAL RULES

CLASS S6A/P - STREAMER TARGET TIME DURATION COMPETITION

7.5 Class S6A/P – Streamer target time duration competition

7.5.1. Purpose of competition

The purpose of this competition is to achieve, as exact as possible, the target time of 240 sec and to launch the model within the five (5) minutes working time for the relevant group. The model shall be timed from the instant of first motion on the launcher until the instant it touches the ground.

7.5.2. Construction requirement and specification

Models for this class are identical with those in Class S6A – Streamer duration competition.

Entry: two models are shall be inspected and marked by the judges for this competition.

7.5.3. Timing and classification

FAI Sporting Code Volume ABR Section 4B paragraph B.12 applies to this competition.

One point will be awarded for each full second of flight time up to a maximum of 240 points (ie 240 seconds a maximum).

The winner of a particular flight in the relevant group receives a score of 1000 points. Other competitors receive points as follows:

$$PC=1000 * \frac{RC}{RW}$$

Where:

PC - points of the competitors

RW - result of the winner in the relevant group

RC - result of the competitor

The five competitors with the highest scores after three starts qualify for the final round.

There will be one flight for the group consisting of all the participants of the final round.

The winner of competition will be determined by the result of the final round.

When there is a tie, the best score of the previous rounds shall be used to determine the individual winner. If a tie still exists after this, then the next best score is used and so on until the tie is broken.

7.5.4 Organisation of starts

- (a) The competitors shall be combined in groups by draw, to permit 5-7 to fly simultaneously. The draw is organised in such a way that, as far as possible, there are no competitors of the same team in the same group. The flying order of different groups is also established by a draw. A different composition of groups shall be used for each round.
- (b) Each group is entitled to five minutes of preparation time before the starter announces the beginning of the working time. During the preparation time, each competitor shall prepare his models for flight.
- (c) Each group of the competitors has five minutes of working time to attempt one official flight. Each competitor has only two attempts to launch. In the case of the catastrophic failure of the model, caused by the catastrophic failure of the engine, the competitor may launch his second model in the same working time.
- (d) The starting order of the competitors in each group will be determined by the order in which the competitors announce their wish to fly to the Range Safety Officer. In the case of a misfire, the competitor is allowed to repeat the start only after the attempts of the rest of the competitors who were registered for start at the time of his attempt.

PAGE DELIBERATELY LEFT BLANK

CLASS S11/P - ROCKET POWERED AIRCRAFT AND SPACESHIPS

11.8 CLASS S11/P

11.8.1. Definition:

The Rocketplane or Spaceship competition is a single class which is limited to models which are scale models, resembling the prototype, of rocketplanes or future (futuristic) spaceship (S-F) past or present. The objective is to build a model of a Rocketplane/Spaceship and fly it by radio control. Rule 4.7. applies.

11.8.2. Choice of the Model:

The competitor must have produced a genuine rocketplane or spaceship (futuristic or not). However, the competitor shall do his best to reproduce a model from an original subject.

There are two possible subclasses to be chosen:

- rocket powered aircraft S11/P (R)
- spaceships (futuristic or not) S11/P (S)

11.8.2.1. Maximum Weight and Thrust:

Maximum weight (at take-off) 1000 g
Maximum total impulse 160 Newton seconds
Engines up to 80 Ns are allowed.

11.8.3. Spaceship with Several Stages:

If the entry is a scale model of a multi-stage vehicle, it may be designed so that one or more of the upper stages are inoperable dummies. However, the upper stage of a multi-staged vehicle may not be entered and flown without its operable lower stages unless specific data is furnished to the judges to prove that the upper stage configuration was designed to be or has been flown separately, alone and as a vehicle itself.

A futuristic spaceship can have several stages. The last stage must be radio-controlled.

11.8.4. Stabilisation Flaps:

The rocketplane model (or spaceship) should have the functional radio-controlled control surfaces of the real craft.

11.8.5. Kit of Plastic Parts:

Parts from plastic model kits cannot be used.

11.8.6. Introduction of the Model for Judging:

Models will be judged for scale qualities in flight condition minus space model motors. All clear plastic fins, launching lugs and fittings and other flight items must be attached to the model for scale judging. Nothing may be added to or taken off the model between the scale judging and the flight except space model motors and recovery device packing.

11.8.7. Number of Flights:

Each model must make one stable flight. Two attempts will be accorded to the competitor, time and weather permitting.

11.8.8. Judging of the Model:

The models will be judged according to the following rules:

- static judging
- flight execution

Static Judging:

The competitor will present his model on the top of the launcher. Both launcher and model will be judged according to the following criteria:

cont/...

11.8.8.1 Quality of technical data - max. 50 points

- genuine drawings of the prototype
- drawings at the same scale as the presented model
- photographs of the model ready to be launched, in flight and landing.

11.8.8.2. Quality of Design - 300 points

- level of detail, care given to assembling and degree of finish
- fuselage: 100 points
- moveable flaps: 100 points
- colours and markings: 100 points

11.8.8.3 Degree of Difficulty - 400 points

The number of points given will be according to the degree of difficulty encountered during the assembly of the model.

- number of external parts: 100 points
- complexity of the painting pattern: 100 points
- complexity of the design necessary for a flying model: 100 points
- launcher: 100 points

Flight Execution

The flight must be in accordance with the following rules, taking off and ascending within a 60 degree conical area; a stable gliding flight; perfect precision of landing on a landing area of 20 m x 5 m (no crash allowed). Each model must fly a stable flight.

11.8.8.4 Judging Criteria - 400 points

- launching: 100 points
- flight stability: 100 points
- landing quality (no crash, no damage): 100 points
- landing precision 100 points in the landing area:
10 points/metre will be deducted
for a landing outside the area.

In the case of a major failure caused by an engine malfunction and if the model can not fly again, no points will be given for the flight execution; only the points given for the static judging will be taken into consideration for the final classification.

CLASS S12/P TIME DURATION TRIATHLON TOURNAMENT

12.6 CLASS S12/P

12.6.1. Definition/Description

Time Duration Triathlon Tournament comprises a series of events open to any single-staged space model which uses subsequently as means of recovery: a) autorotation; b) streamer; c) parachute.

The intent of the competition is to provide the sporting competition which points out versatility of space model design and the skills of the competitors. It combines competitions in autorotation, streamer and parachute descent with a same single model, by changing the means of recovery in subsequent rounds respectively.

12.6.2. Purpose

The purpose of this competition is to achieve the longest flight duration using different recovery systems with the same model: a) autorotation; b) streamer c) parachute.

12.6.3. Specifications

Model specifications must be in compliance with the provisions of paragraphs:

- 12.3. for autorotation recovery;
- 7.2.2. for streamer recovery;
- 7.2.2. for parachute recovery.

12.6.4. Timing And Classification

Timing and classification rules 4.8. 7.4. and 12.5 will be used for this competition.

12.6.5. Sub-Classes

CLASS	TOTAL IMPULSE (Newton-seconds)	MAXIMUM WEIGHT (g)	MAXIMUM FLIGHT TIME (sec)
S12A/P	0,00 - 2,50	60	180
S12B/P	2,51 - 5,00	90	240
S12C/P	5,01 - 10,00	150	300
S12D/P	10,01 - 20,00	200	360

---oOo---